

MADE FOR MOMENTS • MADE FOR MOMENTS • MADE FOR MOMENTS

mindo

Outdoor collection
2024

mindo.com





We love
**functional
design.**

We strive for
innovation.

We are passionate
about **quality.**

The mindo mindset

Mindo is a Danish furniture brand that specializes in outdoor living. Our furniture is meticulously designed to enhance your garden, terrace, or urban space, whether you're spending time with family, friends, or enjoying some quiet time alone.

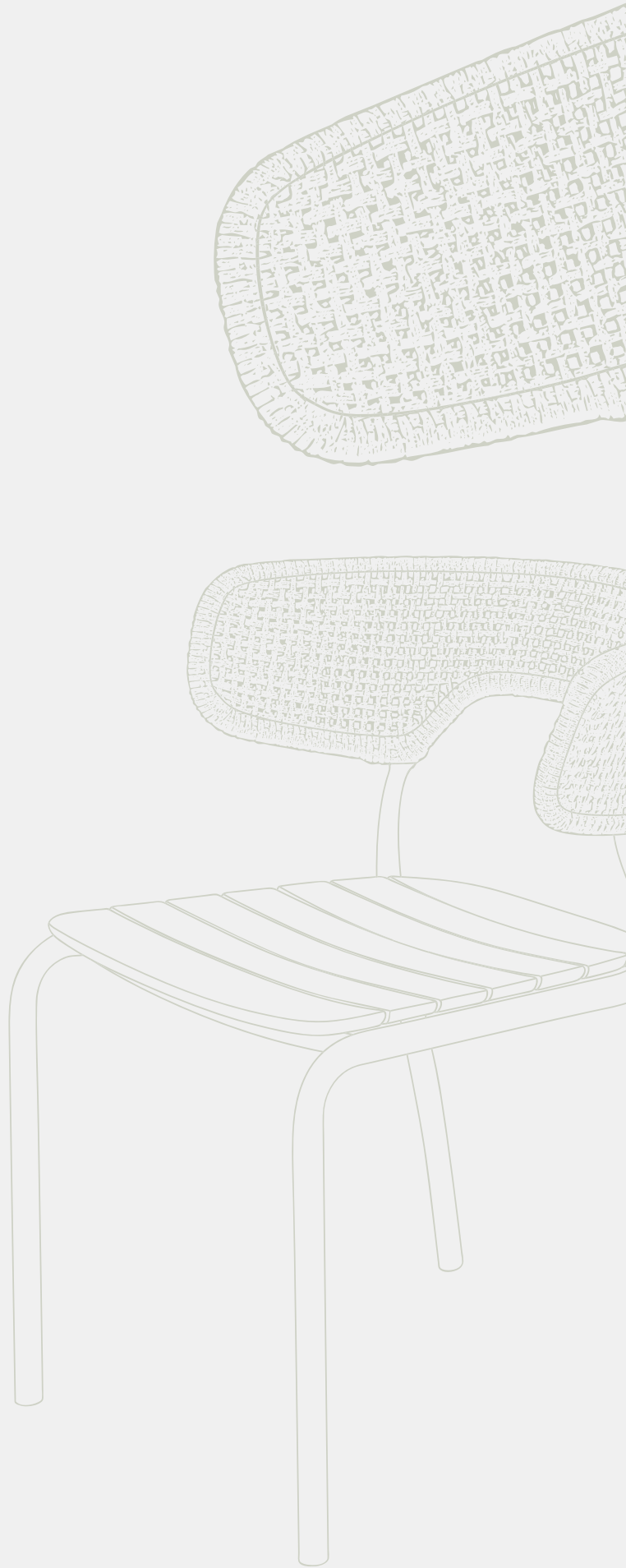
We create furniture that feels like home. Our pieces complement your lifestyle and your unique style without creating unnecessary noise. We use high-quality materials and excellent craftsmanship to ensure that our outdoor furniture can be a part of your family for many years. You are the most important aspect of every step in our design and production process.

From the design idea to the final delivery, we prioritize creating innovative and purposeful products for you while continuously working on minimizing our environmental impact.



Made for moments

3	The mindo mindset
6	Modular Lounge group / mindo I00
12	Modular or not - the choice is yours
14	Dining / mindo I01
22	Bar / High dining / mindo I02
24	Daybed / mindo I03
26	Side table / mindo I04
28	Sun & Lounge / mindo I05
32	Lounge group / mindo I06
38	Meet our designers
40	Details, Materials & Design
42	Lounge group / mindo I07
52	Poufs / mindo I08
56	Side table / mindo I09
58	Rugs & Cushions / mindo II0
60	Extendable dining / mindo III
64	Pull to extend - it's that simple
70	Dining chair / mindo II2
72	Lounge chair / mindo II3
74	Dining & Lounge / mindo II4
80	Bench / mindo II7
84	High-back lounge chair / mindo II8
88	Dining chair / mindo II9
94	Trolley / mindo I20
96	Foldable dining set / mindo I21
100	Materials
104	Index
116	Our approach to sustainability



Outdoor Collection

2024



mind
100

“Good design for me is long-lasting, relevant, and functional products. Comfort is essential for furniture, but just as much is sustainability, both in form of choice of materials as well as production methods. It was important to me that the teak slats are individually replaceable, which contributes to the longevity of this lounge group.”

Designed by
Thomas E. Alken



Modular, Inviting
& Beautiful

Our popular and modular lounge group will fit in and stand out no matter the setting. The combination of the durable aluminium frame and the certified teak sides creates a warm, soft-shaped, and very exclusive look. To achieve the same superior comfort as in a high-quality indoor sofa, the cushions are built with layers of memory foam. Due to an inner membrane and high-quality fabrics, the cushions are weather-resistant and can be left outside even during summer showers. To complement the mindo 100 collection, add matching coffee- and side tables. Available in warm grey or off-white.

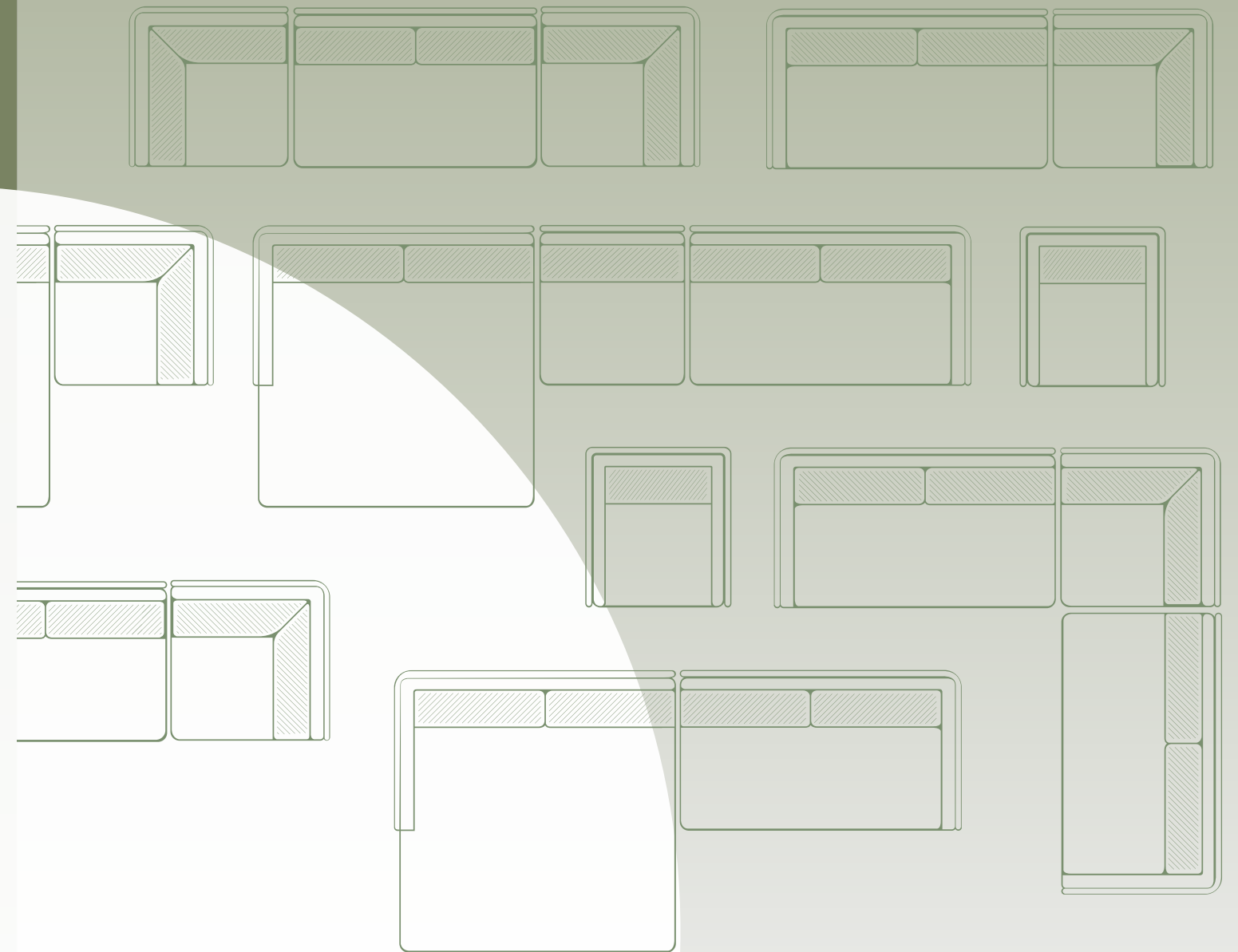




Discover mindo 100



Modular or not – the choice is yours



With seven different modules, the possibilities for creating your personal lounge environment are practically endless. Depending on your available space, you can join corner modules with 2-seaters or daybed modules, then add single or double seaters to extend infinitely. Go beyond the modular setting and add stand-alone elements for a unique look. Our mindo 100 lounge chair, the generous daybed, or our comfortable 3-seater sofa are fantastic additions yet shine just as brightly on their own.

mindo 101



“The mindo 101 chair is the outcome of an ambitious dream; countless design adaptations were made to what may seem like small details, where mindo and I challenged one another in a creative and constructive process, with a lot of hard work on all parts, not least of the talented craftsmen involved.”

Designed by
Thomas E. Alken

Sculptural, Stackable & Comfortable

The mindo 101 collection of chairs and tables offers sleek, modern dining with high comfort, setting the scene for special moments with family and friends. The unique insert of high-quality ceramic in the certified teak tops is not only an eye-catching design feature but serves as a practical detail for placing hot or cold items; the waterproof ceramic is ideal for extreme temperatures. The series encompasses a range of dining tables with a choice of different tops in several sizes, as well as dining and lounge chairs in two colour varieties. The woven backrest of the chairs ensures comfortable seating in various positions, making even long dinners a joyful affair.







Don't worry about placing hot or cold items on the table, the ceramic insert can deal with extreme temperatures. The teak top seems to float above the table frame, adding to the light appearance of the dining table.



Add the lounge chair to your setting for a harmonious outdoor space. Or add two, they are stackable and therefore easy to store.

mind
102

“When on the go or to break away from a traditional outdoor dining setting, I prefer the relaxed and versatile bar table and chair. Elevating myself above standard table height provides a new perspective on my surroundings. When time is short, it’s a less formal way to enjoy a quick espresso on the terrace.”

Designed by
Thomas E. Alken

Elegant, Comfortable
& Functional

Based on the same design as the mindo 101 chairs, the mindo 102 bar chair is both elegant as well as comfortable. Especially suited for the contract market such as hotels and restaurants, more and more private homes are adopting the relaxed trend of “high dining”. Use the bar chairs with one of the bar tables in the collection, choosing a top in certified teak or weather-resistant high-pressure laminate.



mind
103



“The design of the daybed focuses primarily on comfort and well-being; we were opting for a minimalistic design to harmoniously blend in without creating unnecessary distractions.”

Designed by
Thomas E. Alken

Harmonious, Relaxing
& Enjoyable

A simple yet sophisticated daybed for the roof terrace or a quiet spot in the garden. The style is minimalistic and clean, and will complement other mindo products. The Sunbrella-covered cushion lies atop a specialised webbing structure, guaranteeing a very high level of comfort. Choose between a warm grey or off-white frame with its matching cushion for a calming addition to your outdoor area.

mind
104

"For me, this table embodies organic, gentle curves from the handle to the removable top and the body, devoid of any sharp lines. Even the way light caresses its sides exudes a soft, inviting, and very sculptural look. The functionality of the removable top closes the gap between the inside and the outside."

Designed by
Thomas E. Alken

Sculptural, Functional
& Versatile

Our small side table is elegant, light, and easy to move due to its distinct handle, making finding the perfect spot for a cup of coffee just so much easier. The removable top doubles as a serving tray, aiding you on your trip from the kitchen to the patio. Go tone-in-tone with your other furniture or pick a contrasting colour and put a spotlight on this versatile companion.



mindo 105



"I like the unpretentious nature of the lounge chair, very laid-back. We worked hard on the design, on details that are practically invisible but contribute greatly to the success. A vital detail is the slightly curved diagonal aluminium profile to strengthen the frame."

Designed by
Thomas E. Alken

Distinct, Laid-back & Comfortable

Designed with hotels and spa areas in mind, the mindo 105 collection features a unique open-meshed Batyline fabric that offers swift drying when exposed to wet bathing attire or rain showers. The unmistakable blend of comfort and functionality, so characteristic of mindo furniture, is also evident here. The frame's special aluminium profiles are designed with an eye-catching simplicity, establishing the collection as a great companion in any setting. New this season is a matching footstool for the lounge chair and a comfortable sunbed. The sunbed is equipped with small rollers for easy mobility and its easy-to-use backrest mechanism has been patented for its innovative nature.



Crafted with the same attention to detail as the rest of the series, the mindó 105 sunbed can boast small rollers for easy mobility and an innovated backrest mechanism, making adjustment easy without the need to leave your seat.

mindo 106

"We created mindo 106 to engage the user's senses, to amplify well-being in a warm, gentle and inviting sanctuary. The meticulously woven braid offers a comforting embrace while also unveiling a glimpse of the underlying structure."

Designed by
Odosdesign

Embracing, Sheltering & Tactile

This comfortable lounge group activates all senses with its curved, organic form of the frame and the abundant use of Italian rope. The soft, wide braid intertwines with the uniquely shaped aluminium profiles, weaving in and out of the structure, creating a tactile look. The eye-catching high-back chair beckons and embraces, giving a sense of seclusion and providing protection from any wind, making it particularly well-suited for placing in open spaces like parks and communal gardens.





The generous amount of rope used in this lounge series is spun from 100% recyclable Olyna fibers from Italy. The material boasts exceptional weather resistance, incredible strength and stability, and a wool-like feel to it. The beautiful depth in colour is achieved by braiding different tones together.



Meet our designers

At mindo, we are proud of the relationship we have with our designers. We share a love for aesthetics, functional design, and high craftsmanship. And we share a passion for details and a mindset, where we aim to push “good enough” to something better.

Thomas Overby, CEO, mindo

“I love working closely with the designers on our new designs. The close partnerships are a gift to all involved as we challenge each other, at times leading to unexpected results. This process is characterized by passion, and curiosity, paired with a humble mindset on both sides, resulting in a strong platform for merging ideas across cultures and creating the innovation we strive for as a brand.”



Rikke Frost, Denmark

Rikke, a Danish designer, has run her design studio in Århus since 2004. When designing, Rikke focuses on the relevance and longevity of a product and its impact on our environment, both now and in the future. Rikke’s designs for mindo are minimal without ever losing comfort, functionality, or aesthetic magic. Her furniture has a playful quality to it, which she emphasizes with thoughtful details for the user to discover and engage with.



Christian Juhl, Denmark

Christian is a gifted design talent who has won numerous prestigious prizes, amongst them the renowned Finn Juhl design prize (there is no family connection). He feels that part of his strength as a furniture designer stems from his background in carpentry. For mindo, Christian used innovative 3D-knit, a fabric made from recycled bottles to create the unique mindo 114 chairs. Central to Christian’s design philosophy is the aim that his furniture serves a purpose and is functional, regardless of its sculptural aesthetic.



Odosdesign, Spain

The Valencia-based design agency Odosdesign, namely Ana Segovia and Luis Calabuig, are dedicated to integrating creativity and communication in product design. In their collaboration with mindo, their success lies in the ability to understand and translate our vision into furniture that truly embodies our initial ideas. By emphasizing the core element of each creation and placing focus on comfort and usability, their iconic designs accurately convey our mindo mindset.



Thomas E. Alken, Denmark

Thomas is a Danish designer with a design studio in the heart of Copenhagen. Central to Thomas’ design philosophy is the interaction between a product and its user, his creative process always starts with an understanding of the user’s needs. Thomas shares mindo’s meticulous attention to detail and materials that are the responsible choice in terms of sustainability and longevity. Privately, Thomas draws inspiration from the dynamic interplay between the established and modern design scene of the bustling city, as well as his passion for simple living in the countryside.



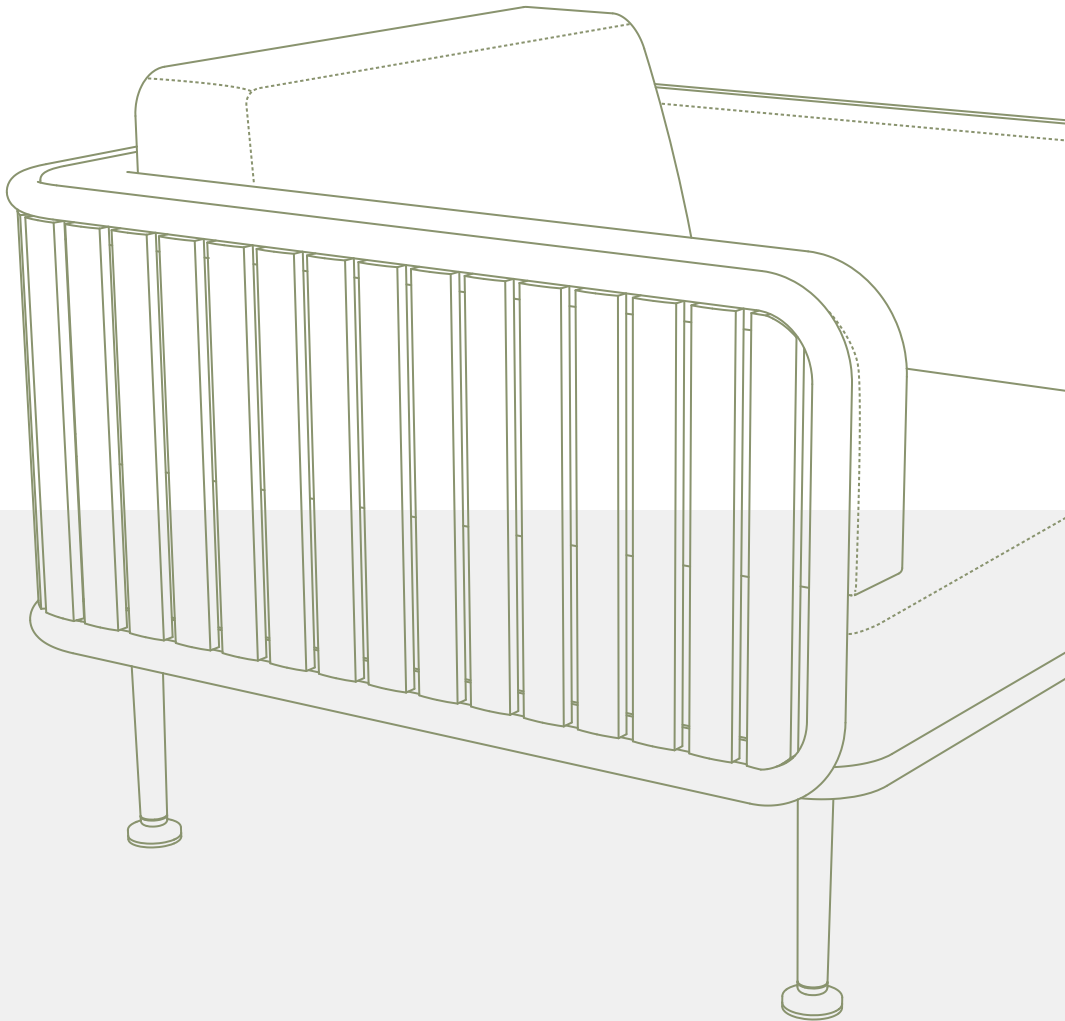
Jesper K. Thomsen, Denmark

Jesper is a versatile talent, both a creative industrial designer and a detail-oriented inventor. His dedication to any product he works with stems from his holistic approach to innovation and problem-solving. His own aversion to handling and storing large extension plates when hosting many guests led him to the ingenious design of a table with an extendable top. This unique solution resulted in a patent in cooperation with mindo and the backbone of a large range of extension tables and benches, namely the mindo 111 series.

Details, Materials & Design

We proudly wear the badge of nerds, finding our kick in discussions about functional designs and sharing a passion for innovative solutions. This enthusiasm spans from our innovative designers and our high-quality material suppliers to our meticulous craftsmen. Together, each of us plays a vital role in achieving a common goal – creating authentic mindo furniture.

While we certainly hope you'll fall head over heels in love with a mindo lounge group or dining chair and welcome it into your home, our ultimate wish is that it seamlessly becomes a part of your daily life. We want it to be more than just a piece of furniture; we want it to be like family – familiar, comfortable, and reliable.



Over time, we encourage you to (re-)discover the subtle details that may have escaped you initially. Run your hand along the mindo 100 teak slats, and you'll find no sharp edges, only tactile pleasure. Spend extended hours around the dinner table in our mindo 101 dining chair, and you will realize the design of the backrests allows for relaxed movement and various sitting positions. Notice the impeccable joinery where aluminium and teak meet, a standout feature on the armrest of the mindo 119 dining chair.

In essence, our passion for design extends beyond aesthetics. We're driven by the desire to create products that not only captivate your visual senses but also enrich your daily experiences. We believe in the fusion of form and function, where every detail, no matter how small, contributes to the overall comfort and appeal of our mindo designs.

mind 107

"On a visit to Italy with mindo, I learned about this rope material, the weaving and twisting techniques. To put focus on this craft, I designed a lounge group that embodies the unique qualities of rope – its texture, strength and versatility. I set out to emphasize the interplay of various materials to each other: the warmth of teak with the sleek aluminium, blending organic shapes with geometric precision."

Designed by
Rikke Frost

Comfortable, Relaxing & Tactile

The essence of this lounge group is all about its organic shape and the harmonious blend of materials: Tactile rope, smooth aluminium, warm teak, and soft fabric. Though the details are understated, they lend a distinct and exquisite touch to the lounge group. The loose back cushions send an inviting vibe as does the ample daybed of the series. The mindo 107 collection transforms any outdoor terrace into a new green living room, blurring the boundaries between indoor and outdoor furniture.









The mindo 107 daybed with its unique, tapered shape is a comfortable oasis in your outdoor space. The five comfortable cushions provide soft support while reading or taking a rejuvenating nap.





mind
108



"I wanted something that was fun and engaging for the user. These poufs are like versatile and adaptable companions, extremely mobile, strong and reliable."

Designed by
Rikke Frost

Adaptable, Harmonious
& Versatile

Whether you call a miniscule outdoor space your own or need stylish extra seating in a heartbeat, the versatile poufs have an aluminium core and are sturdy enough for sitting yet light enough to move around quickly. Beneath the high-quality outdoor fabric is a layer of Quick-dry foam, ensuring the poufs can withstand summer showers. Their harmonious colour and fabric combinations will effortlessly enhance any setting.

Creating the ideal spot to unwind only requires a few essentials, like our adaptable pouf, and practical mindo 109 side table for your drink. Add a soft cushion and matching carpet and you're all set for some quality chill time.



mindo 109



"Reduction to the simplest form without compromising on function or aesthetic magic. The silhouette is clean while the shape compliments the mindo 108 poufs and leads thoughts to a natural, organic petal or leaf."

Designed by
Rikke Frost

Vibrant, Functional & Sleek

The pure look, vibrant colours, and organic shape make the mindo 109 side tables a perfect companion all year round. The glow of the certified teak slats adds warmth and tactility to the sleek aluminium table. Available in five colours to match and complement the mindo collection.

mind
110



“A passion for innovative materials and the fascinating world of colours pushed us to explore the impact these two combined can have on different environments.”

Designed by
Rikke Frost & Mindo Design Team

Soft, Appealing
& Decorative

Enhance your outdoor setting by incorporating cushions and rugs to create a warm, inviting and personal atmosphere. Outdoor rugs on the terrace not only unite your leisure area but also establish an environment of well-being. All materials used are made of recyclable Olyna fibers, fabricated especially for outdoor use, and of premium quality. For the rugs, the fibers are twisted and braided, while they are spun into a tactile fabric for the cushions. The colours are curated to match across the entire mindo collection.

mindó



“My goal was a revolutionary and functional extension table – a truly jaw-dropping experience that caters to everyone’s needs. This patented solution has been years in the making, navigating through numerous trial & error situations, requiring immense patience. But with mindó’s invaluable assistance and support, we’ve triumphed at last.”

Designed by
Jesper K. Thomsen

Extendable, Functional
& Innovative

The extension table is a unique innovation, that is unrivaled in the outdoor furniture market. Made from powder-coated aluminium, the table is extremely weather and scratch-resistant and only requires a minimum of maintenance. The patented extension system of the entire mindó 111 collection provides the tables and benches with the possibility to extend easily and quickly without the use of extra plates. Making room for many guests has never been easier.



The new colour for the mindo 111 softens the table's sleek lines, creating a subtle harmony with the surrounding natural environment.



Discover mindo 111
and mindo 114



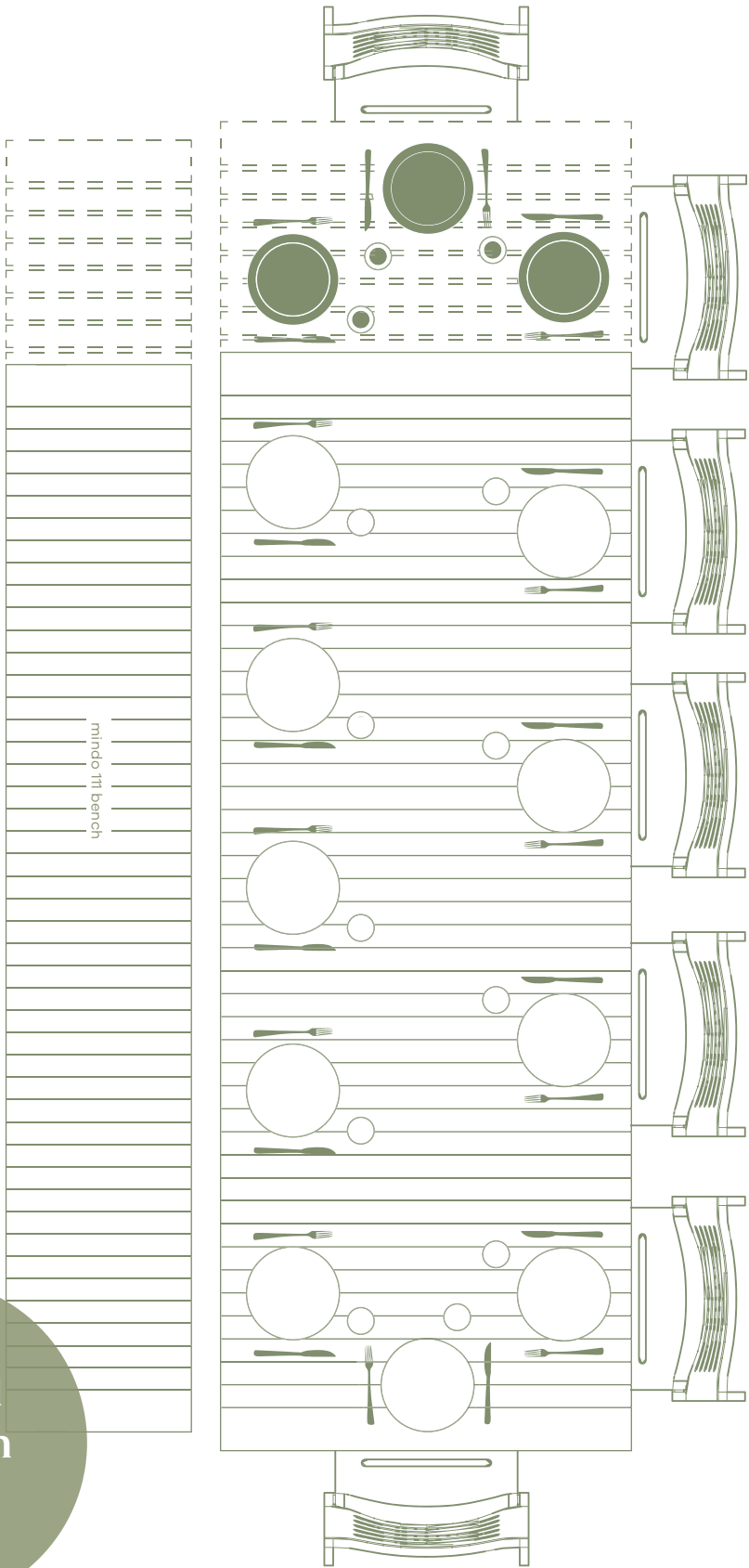
Pull to Extend – it's that simple

The innovative extension table is unique in the outdoor furniture market. With a mere pull on one end of the table, the space between the aluminium slats widens, adding to the overall length. Adding room for extra guests has never been easier. We are so taken by this concept, that we've added two benches and a practical balcony table, which due to its relatively small width, is the ideal choice for limited spaces.

The large mindo 111 extension table, measuring 263 cm (103.5") and extending to 327,5 cm (128.9") is paired with a smart bench that adjusts from 240 cm (94.5") to 300 cm (118.1"). The benches are designed to neatly fit underneath the table when not in use, offering versatile seating alternatives that make better use of available space than chairs.



Patented
extension
system





Discover mindo 111





The smart balcony table is narrower than a regular table and perfect for compact spaces. By adding a bench or folding chairs, you can create a space-efficient dining set for even the tiniest outdoor areas. Thanks to the patented extension system, accommodating unexpected guests is never a challenge.



mind
112



"Our objective was to create a maintenance-friendly chair for outdoor use, one that doesn't seek attention other for its functionality."

Designed by
Mindo Design Team

**Stackable, Practical
& Comfortable**

The mindo 112 dining chair is a stackable, powder-coated aluminium chair crafted for those who appreciate minimalistic seating with essential functionality. Its simplicity enhances its appeal, making it a popular choice for any outdoor dining setting.

mind
113



“This generously sized lounge chair has a playful tone to it. It’s versatile enough to be placed anywhere and built to withstand various conditions. Ideal for summerhouses and untamed gardens.”

Designed by
Mind Design Team

Open, Transparent
& Graphical



This ultimate, no-frills lounge chair boasts excellent comfort. Ideal for hotels, spas, or restaurants as it is inviting yet robust, and easy to maintain due to the powder-coated aluminium frame and open mesh, letting rainwater quickly pass through. The loose back and seating cushions are covered in high-quality outdoor fabric with excellent weather-resistant qualities.

mindo
114



"I'd been working on an indoor version of the chair for my Master's degree from KADK when mindo approached me with their thoughts on an outdoor chair. It's a thrill to see the chair sold globally after working on the design for three years."

Designed by
Christian Juhl

Innovative, Recycled Material
& Unique

The mindo 114 dining and lounge chairs represent yet another unique innovation, a specially knitted 3D-fabric made from recycled plastic bottles. While the frame is made of powder-coated aluminium, the curved backrest underneath the fabric is made of stainless steel, giving you enough flexibility and support for even the longest dinner party. Two beautiful dining tables with aluminium-casted frames complement the dining chair.



Is there a more perfect spot to witness a sunset? Enjoy the soft comfort and support in the mindo 114 lounge chair while winding down after a busy day.



mindo 117

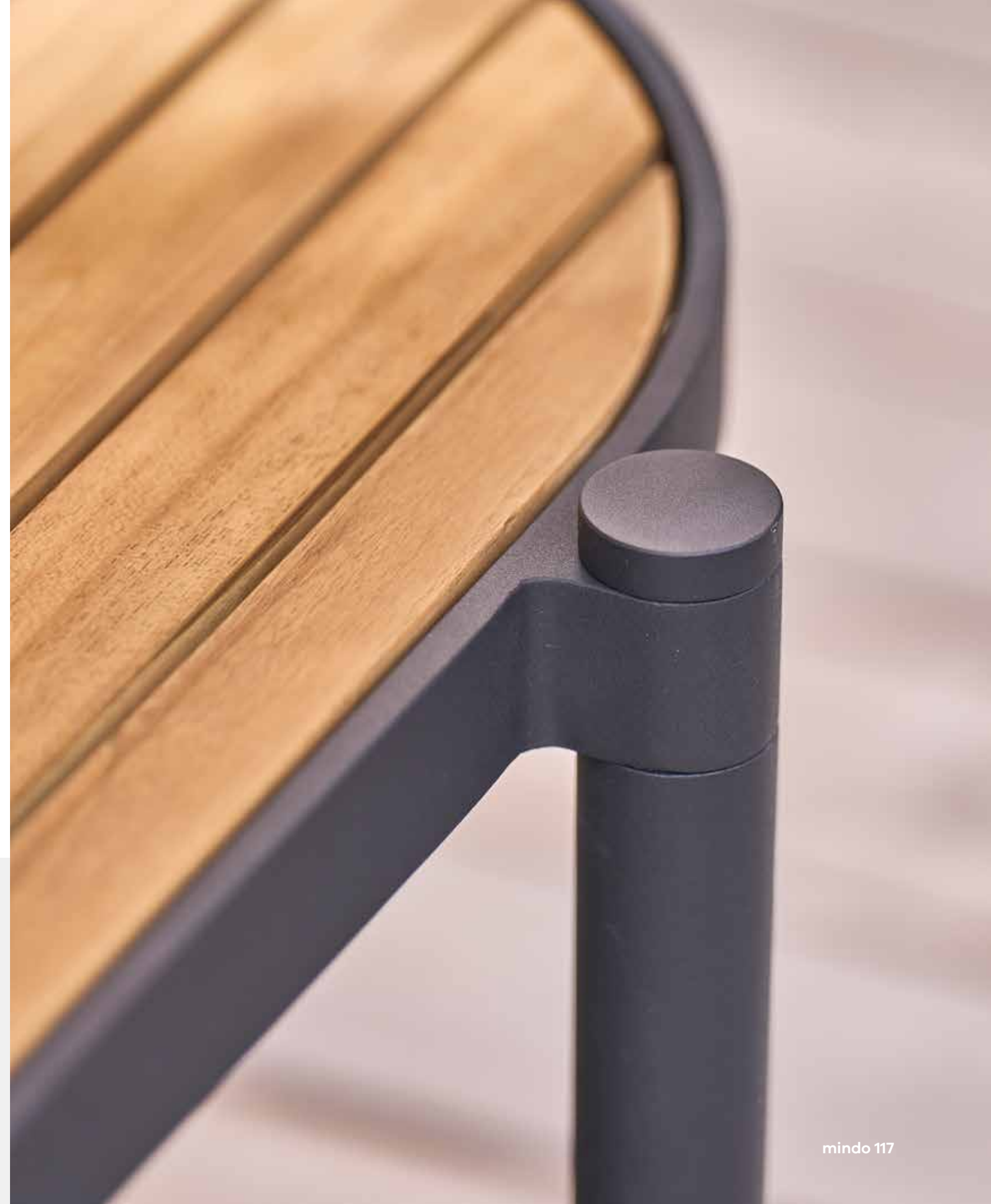
"I set out to create an aesthetic balance between two very different materials, cool aluminium and warm teak. Both materials rely on and use the other for definition and tactility. The pattern and direction of the teak slats create playfulness and counter the strong lines of the frame. For environmental reasons, I put a major focus on creating a flatpack to take up minimal freight space."

Designed by
Rikke Frost

Minimalistic, Practical & Adaptable

Benches are a versatile seating alternative for almost any setting. The mindo 117 benches are no exception and can be placed both inside and outside, wherever the view is spectacular, or a short break is desired. Made of durable powder-coated aluminium and untreated teak slats from certified forests, the bench is available in two sizes. The large bench is equipped with a distinct design feature – a practical bowl for favourite herbs or ice for cooling wine. The smaller bench is more classical with a clean, minimalistic design.





mind 118

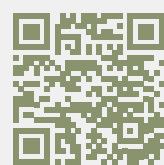


"The challenge we set ourselves was to create an iconic armchair for outdoor living, fusing creativity and innovation to achieve an avant-garde result."

Designed by
Odosdesign

Transparent, Inviting & Sculptural

This contemporary lounge chair is designed with your comfort and relaxation in mind. The high backrest provides a cozy retreat, shielding from the environment surrounding you while the transparency of the material plays with the light and shadows. Sink into the weather-resistant cushions and let yourself unwind. The sturdy teak legs keep the airy lounge chair grounded, adding warmth to the aluminium frame. A little side table continues this study of contrasts, with its thin aluminium top and sturdy teak legs.



Discover mindo 118



mindo 119



"Simple things take time is something I've learned from experience. With this chair, I am trying to combine classic lines with a modern twist. Details like the armrest give the chair its uniqueness."

Designed by
Thomas E. Alken

Tactile, Elegant & Comfortable

The mindo 119 dining chair represents the ideal garden chair, comfortable, stackable, and easy to maintain due to the choice of materials. The untreated teak will take on a silver-grey patina over time, ensuring that the chair will never lose its classic look. The gently contoured seat and back slats offer great comfort as do the armrests. The teak can be individually replaced in case of mishap, meaning that this chair can be a lifelong companion.



Discover mindo 119



mindo 120

"A classic product, but taken to the next level. Innovated because the trolley can be completely disassembled. And sustainable because it is packaged and cargo freighted in a flat pack, saving space and thus emission."

Designed by
Odosdesign

Simple, Functional & Versatile

The designers were given a clear task – to bring innovation and sustainability into a classic category. The result is our mindo 120 serving trolley, whose design enables the product to be transported in a flat package and thus indirectly contributes to climate protection. Mindo 120 is made of specially made aluminum sheets with practical holes that drain rainwater. An organic profile forms the frame and handle, and the large wheels makes it easy to move around the patio or between outdoors and indoors.



mind
121

"I envisioned an outdoor dining set that combines high quality with minimal storage space, without sacrificing comfort or style. The mindo 121 dining set won't clutter your garage or shed during the winter. It's also a perfect solution for hotels or restaurants that need to pack furniture down every evening."

Designed by
Jesper K. Thomsen

Space-saving, Comfortable
& Eco-friendly

The desire to create a modern and sustainable dining set for small outdoor areas gave birth to our mindo 121 series. Folding furniture embodies the concept of minimal volume and is designed to optimize space, both during shipping and home storage. Bamboo, a rapidly renewable resource known for its strength and eco-friendly attributes, forms the seat, back, and table top of this dining set. While it requires regular maintenance to preserve its robust qualities, the effort contributes to its long-lasting sustainability. This collection is the ideal choice where space and sustainability are in focus, offering an excellent blend of functionality and eco-awareness.



The slightly curved bamboo slats of the seat and backrest are a deliberate design choice, prioritizing comfort without compromising on style. All bamboo slats can be replaced individually if necessary, adding to the product's lifecycle.



Materials

We carefully select top-quality materials for our furniture from specialised, premium European and global suppliers committed to sustainability and to minimizing their carbon footprint. Using superior materials guarantees that our products are durable for everyday use and resilient against various weather conditions, ensuring the longevity of our products.



All our **teak** is from certified forests, meeting all strict international regulations. The teak used in our furniture is untreated as we believe that the aging process of teak with its silver-grey patina honours this fantastic material best. All teak parts in our furniture can be replaced individually if necessary, contributing to long-lasting furniture.



Our **fabrics**, sourced from premium European suppliers, are of consistently excellent quality. They exhibit excellent weather resistance (UV, temperature, mold) and stain resistance (anti-bacterial, hydrophobic). It's important to note that prolonged exposure to varying climatic impacts may decrease their effectiveness over time. Regular removal of dirt and covering during extended periods of rain will prolong their lifetime. Stored cushions must be completely dry before covering and aired regularly.

Rope is made of Olyna fibers, 100% solution-dyed polypropylene, in Italy and completely recyclable, soft and “wool-like” to the touch, compliant with the Oeko-Tex standard 100 class 1, anti-bacterial, and extremely resistant to climatic influences. The colours are inspired by nature, and the depth in the tones is created by weaving different coloured fibers together. In the hands of our skilled craftsmen, the material gives life to comfortable, sculptured, and unique pieces of outdoor furniture.



Bamboo is a natural, very strong, and sustainable material that can be harvested every 4-6 years. Bamboo is flexible, elastic, and thus resilient to breaking, even when under pressure. Bamboo furniture must be treated regularly with an oil suitable for outdoor furniture to maintain its high quality. Our bamboo is certified by a responsible source.



Aluminium is a lightweight, yet strong and durable material, ideal for outdoor furniture due to its corrosion resistance. We use state-of-the-art powder-coating techniques in our production process. Powder-coating technology is an eco-friendly and safe process to best protect and prolong longevity of outdoor furniture from weather influences as well as minor scratches. To ensure the highest quality, every frame and slat is individually treated and quality checked by our meticulous craftsmen.



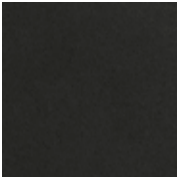
Our Techlam® **ceramic** tabletops are produced in Spain by renowned Levantina. Ceramic is an extremely strong and practically maintenance-free material and ideal for outdoor use in almost any climate. Small variations in the surface may occur as the tops are made from natural, recycled materials. This does not affect the quality of the product. If necessary, the ceramic tiles can be replaced individually contributing to the longevity of the furniture.

High-pressure laminate, also called **HPL**, is produced in Germany and is specially fabricated for outdoor use. The HPL plates are made of resin-impregnated layers of paper, pressed together under extremely high pressure and heat. The tops are weather-resistant (UV, temperature, moisture) and have an extraordinary resistance to scratches, abrasions, and impacts. Regular cleaning of the surface is the only maintenance necessary.

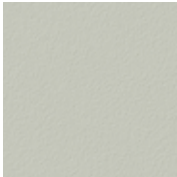


Materials & Colours

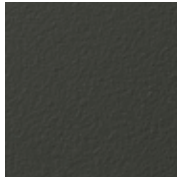
Frame



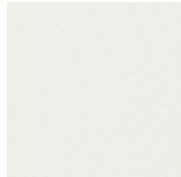
Aluminium
Dark Grey
LH-070



Aluminium
Light Grey
LH-010



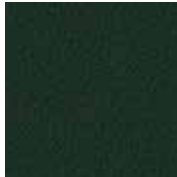
Aluminium
Warm Grey
LH-011



Aluminium
Off-white
LH-012

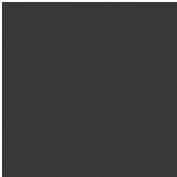


Aluminium
Terracotta Red
LH-013



Aluminium
Dark Green
LH-014

Table top



HPL
Anthracite Grey
SE-01



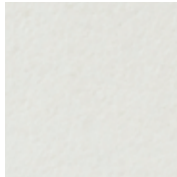
Teak
From certified
forests



Bamboo
From certified
forests



Ceramic
Opium Black
LE01



Ceramic
Basic Neu
LE02



Ceramic
Vulcano Concrete
LE03



Ceramic
Steel Chrome
LE05

Other product components



Teak
From certified
forests

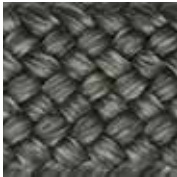


Bamboo
From certified
forests

Rope



Olyna Flat 20 mm
White Beige
TT00587



Olyna Flat 20 mm
Dark Grey
TT00589



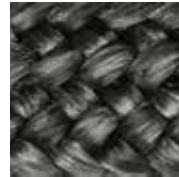
Olyna Flat 20 mm
Terracotta Red
TT00590



Olyna Round 10 mm
Beige Brown
TT00593



Olyna Flat 8 mm
Beige Brown
TT00591

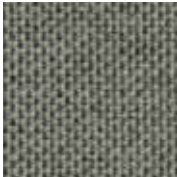


Olyna Flat 8 mm
Dark Grey
TT00592

Fabric



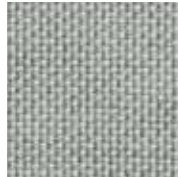
Sunbrella
Silver Grey
ML00049



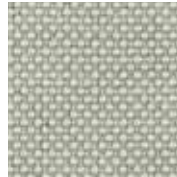
Sunbrella
Carbon
ML00558



Sunbrella
Sooty
ML00481



Sunbrella
Grey Chine
ML00549



Sunbrella
Graumel Chalk
ML00631



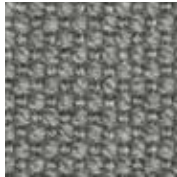
Citel
Amber
ML00622



Olyna Fabric
Taupe
ML00676



Olyna Fabric
White Beige
ML00617



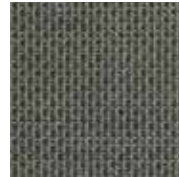
Olyna Fabric
Silver Grey
ML00618



Olyna Fabric
Terracotta Red
ML00619



Batyline
Beige Mix
ML00646



Batyline
Brown/Grey Mix
ML00648

3D-Knit








3D-Knit
Light Grey Melange
MG66



3D-Knit
Beige
Z83

mindo 100

Corner module

	Width	90 cm / 35.4 inches		
	Depth	90 cm / 35.4 inches		
	Height	64,5 cm / 25.4 inches		
	Seat height	39,5 cm / 15.6 inches		
	Item no:	30003-011-558-609	Frame: Warm Grey	
			Fabric: ML00558	
	30003-012-549-610		Frame: Off-white	
			Fabric: ML00549	
	Frame	Aluminium		
	Wood	Teak		

mindo 100



Daybed module - Left



Length	160 cm / 63 inches		
Depth	160 cm / 63 inches		
Height	64,5 cm / 25.4 inches		
Seat height	39,5 cm / 15.6 inches		
Item no:			
30007-011-558-609	Frame: Warm Grey		
	Fabric: ML00558		
30007-012-549-610	Frame: Off-white		
	Fabric: ML00549		
Frame		Aluminium	
Wood		Teak	




mindo 100

Daybed

	Length	163 cm / 64 inches		
	Depth	160 cm / 63 inches		
	Height	64,5 cm / 25.4 inches		
	Seat height	39,5 cm / 15.6 inches		
	Item no:	30011-011-558-609	Frame: Warm Grey	
			Fabric: ML00558	
		30011-012-549-610	Frame: Off-white	
			Fabric: ML00549	
Frame		Aluminium		
Wood		Teak		






mindo 100

Coffee table - Square

	Length	83,5 cm / 32.9 inches		
	Width	83,5 cm / 32.9 inches		
	Height	40 cm / 15.7 inches		
	Item no:	30015-011-T01	Frame: Warm Grey	
		30015-012-T01	Frame: Off-white	
	Frame	Aluminium		
	Top	Teak		






mindo 100

Single module

	Length	83 cm / 32.7 inches		
	Depth	90 cm / 35.4 inches		
	Height	64,5 cm / 25.4 inches		
	Seat height	39,5 cm / 15.6 inches		
	Item no:	30004-011-558-609	Frame: Warm Grey	
			Fabric: ML00558	
	30004-012-549-610		Frame: Off-white	
			Fabric: ML00549	
	Frame	Aluminium		
	Wood	Teak		

mindo 100

Daybed module - Right

	Length	160 cm / 63 inches		
	Depth	160 cm / 63 inches		
	Height	64,5 cm / 25.4 inches		
	Seat height	39,5 cm / 15.6 inches		
Item no:		30008-011-558-609	Frame: Warm Grey	
			Fabric: ML00558	
		30008-012-549-610	Frame: Off-white	
			Fabric: ML00549	
Frame		Aluminium		
Wood		Teak		

mindo 100

Lounge chair

Width	86.5 cm / 34 inches
Depth	90 cm / 35.4 inches
Height	64,5 cm / 25.4 inches
Seat height	39,5 cm / 15.6 inches

Item no:

30009-011-558-609

Frame: Warm Grey

Fabric: ML00558

30009-012-549-610

Frame: Off-white

Fabric: ML00549

Frame


Aluminium







Wood

Teak

mindo 101

Dining chair - Stackable



Width	58 cm / 22.8 inches	
Depth	57 cm / 22.4 inches	
Height	77 cm / 30.3 inches	
Seat height	47,8 cm / 18.8 inches	
Item no:	30017-010-591	Frame: Light Grey 
		Rope: Beige Brown 
	30017-070-592	Frame: Dark Grey 
		Rope: Dark Grey 
	101017-481	Cushion: ML00481 
	101017-558	Cushion: ML00558 
Frame	Aluminium	
Seat	Teak	

mindo 100

2-seater module - Left

	Length	160 cm / 63 inches		
	Depth	90 cm / 35.4 inches		
	Height	64.5 cm / 25.4 inches		
	Seat height	39.5 cm / 15.6 inches		
	Item no:	30005-011-558-609	Frame: Warm Grey	
			Fabric: ML00558	
	30005-012-549-610		Frame: Off-white	
			Fabric: ML00549	
	Frame	Aluminium		
	Wood	Teak		






mindo 100

Double module

	Length	137 cm / 54 inches		
	Depth	90 cm / 35.4 inches		
	Height	64,5 cm / 25.4 inches		
	Seat height	39,5 cm / 15.6 inches		
	Item no:	30010-011-558-609	Frame: Warm Grey	
			Fabric: ML00558	
		30010-012-549-610	Frame: Off-white	
			Fabric: ML00549	
	Frame		Aluminium	
	Wood		Teak	


mindo 100

Coffee table - Round

	Diameter/Ø	58,5 cm / 23 inches	
	Height	47 cm / 18.5 inches	
	Item no:		
	30013-1-011-LE01	Frame: Warm Grey	
		Top: Opium Black	
	30013-1-012-LE02	Frame: Off-white	
		Top: Basic Neu	
	Frame	Aluminium	
	Top	Ceramic	


mindó 101

Dining table · Round

	Diameter/Ø	120 cm / 472 inches
	Height	75,7 cm / 29.8 inches
	Item no:	
	30043-1-010-T01-5	Frame: Light Grey Top: Teak
	30043-1-012-T01-3	Frame: Off-white Top: Teak
	30043-1-070-T01-1	Insert: Vol. Concrete Frame: Dark Grey Top: Teak Insert: Opium Black
	Frame	Aluminium
	Top	Ceramic Teak


mindó 101

Cafe table

	Length	74,7 cm / 29.4 inches
	Width	74,7 cm / 29.4 inches
	Height	74 cm / 29.1 inches
	Item no:	
	30061-010-T01	Frame: Light Grey Top: Teak
	30061-014-T01	Frame: Dark Green Top: Teak
	30061-070-T01	Frame: Dark Grey Top: Teak
	Frame	Aluminium
	Top	Teak


mindó 103

Daybed

	Length	197 cm / 77.6 inches
	Width	84 cm / 33.1 inches
	Height / Seat height	39 cm / 15.4 inches
	Item no:	
	30040-011-558-609	Frame: Warm Grey Fabric: ML00558
	30040-012-549-610	Frame: Off-white Fabric: ML00549
	Frame	Aluminium


mindó 105

Sunbed

	Length	203 cm / 79.9 inches
	Width	88 cm / 34.6 inches
	Height	37 cm / 14.6 inches
	Item no:	
	30085-010-646	Frame: Light Grey Fabric: ML0646
	30085-070-648	Frame: Dark Grey Fabric: ML00648
	Frame	Aluminium


mindó 101

Dining table · Square

	Length	74 cm / 29.1 inches
	Width	74 cm / 29.1 inches
	Height*	74 cm / 29.1 inches
	Item no:	
	30055-1-010-LE5	Frame: Light Grey Top: Ceramic
	30055-1-070-LE01	Steel Chrome Frame: Dark Grey Top: Ceramic Opium Black
	Frame	Aluminium
	Top	Ceramic


mindó 102

Bar chair

	Width	52 cm / 20.4 inches
	Depth	52,5 cm / 20.7 inches
	Height	108,5 cm / 42.7 inches
	Seat height	78,5 cm / 30.9 inches
	Item no:	
	30016-010-591	Frame: Light Grey Rope: Beige Brown
	30016-070-592	Frame: Dark Grey Rope: Dark Grey
	Frame	Aluminium
	Seat	Teak


mindó 104

Side table with handle

	Diameter/Ø	40 cm / 15.8 inches
	Height	60,5 cm / 23.8 inches
	Item no:	
	30002-010	Frame: Light Grey
	30002-013	Frame: Terra. Red
	30002-014	Frame: Dark Green
	30002-070	Frame: Dark Grey
	Frame	Aluminium


mindó 106

2 1/2-seater Sofa

	Length	180 cm / 70.9 inches
	Depth	90 cm / 35.4 inches
	Height	78,5 cm / 30.9 inches
	Seat height	43,7 cm / 17.2 inches
	Item no:	
	30029-010-049	Frame: Light Grey Fabric: ML00049 Rope: White Beige
	30029-070-481	Frame: Dark Grey Fabric: ML00481 Rope: Dark Grey
	Frame	Aluminium


mindó 101

Dining table · Square

	Length	74 cm / 29.1 inches
	Width	74 cm / 29.1 inches
	Height*	75 cm / 29.5 inches
	Item no:	
	30055-010-T01	Frame: Light Grey Top: Teak
	30055-012-T01	Frame: Off-white Top: Teak
	30055-070-T01	Frame: Dark Grey Top: Teak
	Frame	Aluminium
	Top	Teak

mindó 102

Bar table · Rectangular

	Length	163 cm / 64.2 inches
	Width	81,5 cm / 32 inches
	Height	105 cm / 41.3 inches
	Item no:	
	30018-070-S01	Frame: Dark Grey Top: HPL
	30065-010-T01	Anthracite Grey Frame: Light Grey Top: Teak
	30065-070-T01	Frame: Dark Grey Top: Teak
	Frame	Aluminium
	Top	HPL Teak


mindó 105

Lounge chair

	Width	77,7 cm / 30.6 inches
	Depth	88,5 cm / 34.8 inches
	Height	72,5 cm / 28.5 inches
	Seat height	39 cm / 15.4 inches
	Item no:	
	30001-010-646	Frame: Light Grey Fabric: ML0646
	30001-070-648	Frame: Dark Grey Fabric: ML00648
	Frame	Aluminium


mindó 106

3-seater Sofa

	Length	250,5 cm / 98.6 inches
	Depth	90 cm / 35.4 inches
	Height	78,5 cm / 30.9 inches
	Seat height	43,7 cm / 17.2 inches
	Item no:	
	30030-010-049	Frame: Light Grey Fabric: ML00049 Rope: White Beige
	30030-070-481	Frame: Dark Grey Fabric: ML00481 Rope: Dark Grey
	Frame	Aluminium


mindó 101

Lounge chair · Stackable

	Width	72,5 cm / 28.5 inches
	Depth	72 cm / 28.3 inches
	Height	75 cm / 29.5 inches
	Seat height	37,5 cm / 14.7 inches
	Item no:	
	30054-010-591	Frame: Light Grey Rope: Beige Brown
	30054-070-592	Frame: Dark Grey Rope: Dark Grey
	101054-481	Cushion: ML00481
	101054-558	Cushion: ML00558
	Frame	Aluminium
	Seat	Teak


mindó 102

Bar table · Square

	Length	81,5 cm / 32 inches
	Width	81,5 cm / 32 inches
	Height	105 cm / 41.3 inches
	Item no:	
	30019-070-S01	Frame: Dark Grey Top: HPL
	30063-010-T01	Anthracite Grey Frame: Light Grey Top: Teak
	30063-070-T01	Frame: Dark Grey Top: Teak
	Frame	Aluminium
	Top	HPL Teak


mindó 105

Footstool

	Width	58 cm / 22.8 inches
	Depth	52 cm / 20.5 inches
	Height	38 cm / 15 inches
	Item no:	
	30084-010-646	Frame: Light Grey Fabric: ML0646
	30084-070-648	Frame: Dark Grey Fabric: ML00648
	Frame	Aluminium


mindó 106

Lounge chair

	Length	90,5 cm / 35.6 inches
	Depth	90 cm / 35.4 inches
	Height	78,5 cm / 30.9 inches
	Seat height	43,7 cm / 17.2 inches
	Item no:	
	30032-010-049	Frame: Light Grey Fabric: ML00049 Rope: White Beige
	30032-070-481	Frame: Dark Grey Fabric: ML00481 Rope: Dark Grey
	Frame	Aluminium

mindo 106


Footstool



Width	74 cm / 29.1 inches
Depth	59 cm / 23.2 inches
Height	43 cm / 16.9 inches
Item no:	
30031-010-049	Frame: Light Grey
	Fabric: ML00049
30031-070-481	Frame: Dark Grey
	Fabric: ML00481
Frame	Aluminium

mindo 107


3-seater Sofa



Length	232,2 cm / 91.4 inches
Depth	88,2 cm / 34.7 inches
Height	66,5 cm / 26.2 inches
Seat height	42,5 cm / 16.7 inches
Item no:	
30025-070-481-593	Frame: Dark Grey
	Fabric: ML00481
	Rope: Beige Brown
Frame	
Seat frame	Aluminium
	Teak

mindo 107


Side table



Diameter/Ø	57,3 cm / 22.6 inches
Height	46 cm / 18.1 inches
Item no:	
30048-070-T01	Frame: Dark Grey
Frame	Aluminium
Top	Teak

mindo 110


Cushions · 45 x 45



Length	45 cm / 17.7 inches
Height	45 cm / 17.7 inches
Item no:	
Z00107-45-617	Olyna Fabric White Beige
Z00105-45-618	Olyna Fabric Silver Grey
Z00106-45-619	Olyna Fabric Terracotta
Z00111-45-676	Olyna Fabric Taupe

mindo 106


High back Lounge chair



Length	90,5 cm / 35.6 inches
Depth	90 cm / 35.4 inches
Height	120,5 cm / 47.4 inches
Seat height	43,7 cm / 17.2 inches
Item no:	
30034-010-049	Frame: Light Grey
	Fabric: ML00049
	Rope: White Beige
30034-070-481	Frame: Dark Grey
	Fabric: ML00481
	Rope: Dark Grey
Frame	Aluminium

mindo 107


Lounge chair



Width	95 cm / 37.4 inches
Depth	77,8 cm / 30.6 inches
Height	66,5 cm / 26.2 inches
Seat height	42,5 cm / 16.7 inches
Item no:	
30026-070-481-593	Frame: Dark Grey
	Fabric: ML00481
	Rope: Beige Brown
Frame	
Seat frame	Aluminium
	Teak

mindo 108

Pouf · Small



Width	40 cm / 15.8 inches
Depth	42 cm / 16.5 inches
Height	48 cm / 18.9 inches
Item no:	
30036-617631	White Beige
30036-618549	Grey
30036-619622	Terracotta
30036-676558	Taupe
Frame	Aluminium

mindo 110


Rug · Ø140 cm



Diameter/Ø	140 cm / 55.1 inches
Item no:	
Z00001-587	Olyna Rope White Beige
Z00001-590	Olyna Rope Terracotta
Z00001-593	Olyna Rope Beige Brown

mindo 106


Coffee table · Rectangular



Length	120 cm / 47.2 inches
Width	60 cm / 23.6 inches
Height	30,5 cm / 12 inches
Item no:	
30033-010-LE05	Frame: Light Grey
	Top: Steel Chrome
30033-070-LE01	Frame: Dark Grey
	Top: Opium Black
Frame	Aluminium
Top	Ceramic

mindo 107


Coffee table



Length	126 cm / 49.6 inches
Width	53 cm / 20.9 inches
Height	38,5 cm / 15.2 inches
Item no:	
30027-070-LE01	Frame: Dark Grey
	Top: Opium Black
Frame	
Top	Aluminium
Wood	Ceramic
	Teak

mindo 108


Pouf · Large



Width	74,5 cm / 29.3 inches
Depth	65,5 cm / 25.8 inches
Height	35 cm / 13.8 inches
Item no:	
30037-617631	White Beige
30037-618549	Grey
30037-619622	Terracotta
30037-676558	Taupe
Frame	Aluminium

mindo 110


Rug · Ø200 cm



Diameter/Ø	200 cm / 78.7 inches
Item no:	
Z00002-500	Olyna Rope Special Mixed
Z00002-590	Olyna Rope Terracotta
Z00002-593	Olyna Rope Beige Brown

mindo 107


Daybed



Length	150 cm / 59.1 inches
Depth	155 cm / 61 inches
Height	76 cm / 29.9 inches
Seat height	42,5 cm / 16.7 inches
Item no:	
30024-070-481-593	Frame: Dark Grey
	Fabric: ML00481
	Rope: Beige Brown
Frame	
Seat frame	Aluminium
	Teak

mindo 107


Footstool



Diameter/Ø	71,3 cm / 28.1 inches
Seat height	40 cm / 15.7 inches
Item no:	
30047-070-481	Frame: Dark Grey
	Fabric: ML00481
Frame	
Legs	Aluminium
	Teak

mindo 109


Side table



Width	48 cm / 18.9 inches
Depth	35 cm / 13.8 inches
Height	50 cm / 19.7 inches
Item no:	
30038-010	Frame: Light Grey
30038-012	Frame: Off-white
30038-013	Frame: Terra. Red
30038-014	Frame: Dark Green
30038-070	Frame: Dark Grey
Frame	Aluminium
Wood	Teak

mindo 110

Rug · 81 x 300 cm



Length	300 cm / 118.1 inches
Width	81 cm / 31.9 inches
Item no:	
Z00003-501	Olyna Rope Special Mix, White Beige, Beige Brown and Petrol

mindo 110


Rug · 200 x 300 cm



Length	300 cm / 118.1 inches
Width	200 cm / 78.7 inches
Item no: Z00004-503	Olyna Rope Special Mix, Beige Brown, White Beige and Terracotta

mindo 111

Bench · Extension small




Length	139 cm / 54.7 inches
Extended	173 cm / 68.1 inches
Width	42 cm / 16.5 inches
Height	46 cm / 18.1 inches
Item no: 30057-010 30057-014 30057-070	Frame: Light Grey Frame: Dark Green Frame: Dark Grey
Frame	Aluminium

Design: Patent no. 3815574

mindo 114


Dining chair



Width	55,1 cm / 21.7 inches
Depth	58,5 cm / 23 inches
Height	86,5 cm / 34.1 inches
Seat height	50,7 cm / 19.9 inches
Item no: 30020-010-049-Z83	Frame: Light Grey 3D-Knit: Beige Brown Fabric: ML00049
30020-070-481-MG66	Frame: Dark Grey 3D-Knit: Light Grey Fabric: ML00481
Frame	Aluminium

mindo 117


Bench · Small



Length	140 cm / 55.1 inches
Width	47,4 cm / 18.6 inches
Height	45 cm / 17.7 inches
Item no: 30067-070-T01	Frame: Dark Grey
Frame Seat	Aluminium Teak

mindo 111

Dining table · Extension




Length	162 cm / 63.8 inches
Extended	200,5 cm / 78.9 inches
Width	90 cm / 35.4 inches
Height	76 cm / 29.9 inches
Item no: 30056-010 30056-014 30056-070	Frame: Light Grey Frame: Dark Green Frame: Dark Grey
Frame	Aluminium

Design: Patent no. 3815574

mindo 111

Bench · Extension large




Length	240 cm / 94.5 inches
Extended	300 cm / 118.1 inches
Width	45 cm / 17.7 inches
Height	46 cm / 18.1 inches
Item no: 30058-010 30058-014 30058-070	Frame: Light Grey Frame: Dark Green Frame: Dark Grey
Frame	Aluminium

Design: Patent no. 3815574

mindo 114


Lounge chair



Width	76 cm / 29.9 inches
Depth	71,5 cm / 28.1 inches
Height	86,5 cm / 34.1 inches
Seat height	43 cm / 16.9 inches
Item no: 30021-010-049-Z83	Frame: Light Grey 3D-Knit: Beige Brown Fabric: ML00049
30021-070-481-MG66	Frame: Dark Grey 3D-Knit: Light Grey Fabric: ML00481
Frame	Aluminium

mindo 117

Bench



Length	180 cm / 70.9 inches
Width	47,4 cm / 18.7 inches
Height	46 cm / 18.1 inches
Item no: 30050-070-T01	Frame: Dark Grey
Frame Seat	Aluminium Teak

mindo 111

Dining table · Extension




Length	263 cm / 103.5 inches
Extended	327,5 cm / 128.9 inches
Width	100 cm / 39.4 inches
Height	76 cm / 29.9 inches
Item no: 30039-010 30039-014 30039-070	Frame: Light Grey Frame: Dark Green Frame: Dark Grey
Frame	Aluminium

Design: Patent no. 3815574

mindo 112


Dining chair · Stackable



Width	50 cm / 19.7 inches
Depth	57 cm / 22.4 inches
Height	82 cm / 32.3 inches
Seat height	47 cm / 18.5 inches
Item no: 10934-010 10934-014 10934-070	Frame: Light Grey Frame: Dark Green Frame: Dark Grey
10934D1-481	Cushion ML00481
Frame	Aluminium

mindo 114


Dining table · Oval



Length	215 cm / 84.6 inches
Width	95 cm / 37.4 inches
Height	74 cm / 29.1 inches
Item no: 30023-1-010-LE03	Frame: Light Grey Top: Vul. Concrete
30023-1-070-LE05	Frame: Dark Grey Top: Steel Chrome
Frame Top	Aluminium Ceramic

mindo 118

High back Lounge chair



Width	79 cm / 31.1 inches
Depth	94 cm / 37.1 inches
Height	112 cm / 44.1 inches
Seat height	42 cm / 16.5 inches
Item no: 30070-012-549	Frame: Off-white Fabric: ML00549
30070-070-481	Frame: Dark Grey Fabric: ML00481
Frame Legs	Aluminium Teak

mindo 111

Balcony table · Extension




Length	162 cm / 63.8 inches
Extended	200,5 cm / 78.9 inches
Width	60 cm / 23.6 inches
Height	76 cm / 29.9 inches
Item no: 30064-010 30064-014 30064-070	Frame: Light Grey Frame: Dark Green Frame: Dark Grey
Frame	Aluminium

Design: Patent no. 3815574

mindo 113


Lounge chair



Width	79 cm / 31.1 inches
Depth	87 cm / 34.3 inches
Height	92 cm / 36.2 inches
Seat height	41 cm / 16.1 inches
Item no: 11275-014-481	Frame: Dark Green Cushion ML00481
11275-070-481	Frame: Dark Grey Cushion ML00481
Frame	Aluminium

mindo 114


Dining table · Round



Diameter/Ø	95 cm / 37.4 inches
Height	75 cm / 29.5 inches
Item no: 30022-070-T01	Frame: Dark Grey Top: Teak
Frame Top	Aluminium Teak

mindo 118

Table



Diameter/Ø	50 cm / 19.7 inches
Height	45 cm / 17.7 inches
Item no: 30073-012 30073-070	Top: Off-white Top: Dark Grey
Top Legs	Aluminium Teak

mindó 119 Dining chair · Stackable



Width	60 cm / 23.6 inches
Depth	56,2 cm / 22.1 inches
Height	79 cm / 31.1 inches
Seat height	45 cm / 17.7 inches
Item no:	
30075-010	Frame: Light Grey
30075-012	Frame: Off-white
30075-014	Frame: Dark Green
30075-070	Frame: Dark Grey
30075D1-049	Cushion: ML00049
30075D1-481	Cushion: ML00481
30075D1-558	Cushion: ML00558
Frame	Aluminium
Seat	Teak

mindó 120 Trolley



Length	98,6 cm / 38.8 inches
Width	61,7 cm / 24.2 inches
Height	80,5 cm / 31.7 inches
Item no:	
30069-010	Frame: Light Grey
30069-014	Frame: Dark Green
30069-070	Frame: Dark Grey
Frame	Aluminium

Mindo cannot be held accountable for any printing errors in the catalogue. Further, mindo reserves the right to change product designs in case it is found necessary.

mindó 121 Dining chair · Foldable



Width	48,6 cm / 19.1 inches
Depth	60,2 cm / 23.7 inches
Height	83,6 cm / 32.9 inches
Seat height	45,5 cm / 17.9 inches
Item no:	
30076-010	Frame: Light Grey
30076-014	Frame: Dark Green
30076-070	Frame: Dark Grey
30076D1-049	Cushion: ML00049
30076D1-481	Cushion: ML00481
30076D1-558	Cushion: ML00558
Frame	Aluminium
Seat	Bamboo

mindó 121 Table · Foldable

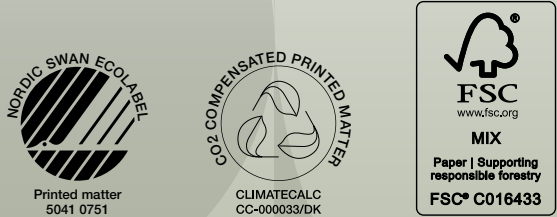


Length	75 cm / 29.5 inches
Width	75 cm / 29.5 inches
Height	75,4 cm / 29.7 inches
Item no:	
30080-010	Frame: Light Grey
30080-014	Frame: Dark Green
30080-070	Frame: Dark Grey
Frame	Aluminium
Top	Bamboo

This catalog is printed on paper certified with the Nordic Swan Ecolabel, is CO₂-neutral as well as FSC-certified.

The paper was chosen because it emits less CO₂ during production and transport than other directly comparable types of paper. The FSC certification shows that the paper comes from responsible forestry, where traceability, social responsibility, and securing the biodiversity of the forest are documented. The printing company Strandbygaard is certified with the Nordic Swan Ecolabel as well as being environmentally certified under ISO14001, ensuring that production complies with numerous strict requirements.

Printer: Strandbygaard · www.strandbygaard.dk



Cover no. 1

Item no:

39999F1

Product match

Ref. match

mindó 100

30003 / 30004 / 30009

mindó 101

30054

mindó 105

30001

mindó 106

30032

mindó 107

30026

mindó 113

11275

mindó 114

30021

mindó 118

30070

Length: 93 cm / 36.6 inches

Width: 90 cm / 35.4 inches

Height: 92 cm / 36.2 inches

L

W

H

Cover no. 2

Item no:

39998F1

Product match

Ref. match

mindó 100

30007 / 30008 / 30011

mindó 107

30024

Length: 163 cm / 64.2 inches

Width: 160 cm / 63 inches

Height: 76 cm / 29.9 inches

L

W

H

Cover no. 3

Item no:

39997F1

Product match

Ref. match

mindó 100

30005 / 30006 / 30010

mindó 106

30029

mindó 111

30056 / 30064

Length: 180 cm / 70.9 inches

Width: 90 cm / 35.4 inches

Height: 78,5 cm / 30.9 inches

L

W

H

Cover no. 4

Item no:

39996F1

Product match

Ref. match

mindó 101

30042 / 30042-1

mindó 111

30056

mindó 114

30023

Length: 222 cm / 87.4 inches

Width: 160 cm / 63 inches

Height: 78 cm / 30.7 inches

L

W

H

Cover no. 5

Item no:

39995F1

Product match

Ref. match

mindó 101

30043 / 30055 / 30055-1

mindó 114

30022

Diameter/Ø: 188 cm / 74 inches

Height: 89 cm / 35 inches

Ø

H

Cover no. 6

Item no:

39994F1

Product match

Ref. match

mindó 111

30039

Length: 326 cm / 128.3 inches

Width: 168 cm / 66.1 inches

Height: 89 cm / 35 inches

L

W

H

Cover no. 7

Item no:

39993F1

Product match

Ref. match

mindó 102

30019 / 30063

mindó 106

30034

Length: 90 cm / 35.4 inches

Width: 90 cm / 35.4 inches

Height: 120 cm / 47.2 inches

L

W

H

Cover no. 8

Item no:

39992F1

Product match

Ref. match

mindó 100

30068

mindó 106

30030

mindó 107

30025

Length: 250 cm / 98.4 inches

Width: 90 cm / 35.4 inches

Height: 78,5 cm / 30.9 inches

L

W

H

Cover no. 9

Item no:

39991F1

Product match

Ref. match

mindó 103

30040

mindó 105

30085

Length: 197 cm / 77.6 inches

Width: 84 cm / 33 inches

Height: 36 cm / 14.2 inches

L

W

H

Our approach to sustainability

The modern furniture industry faces a necessary question: Can a brand truly embrace sustainability? At our core, we believe it can.

While producing garden furniture in Asia with European materials and shipping globally might seem counterintuitive to sustainability, we recognize that sustainability manifests in various forms. For us, it's embedded in our designs, our material and supplier choices, and measured in our production and packaging methods.

From the design phase until the finished product leaves our factory, our commitment to sustainability guides every decision. We prioritize high-quality materials and select suppliers that do their best to minimize carbon emission.

The result? Products with extended longevity and timeless, functional designs that defy fleeting trends.

Our approach goes beyond rhetoric. We advocate for product care and repair over disposability. Take, for instance, the mindo 121 collection, where individually replaceable bamboo slats ensure a prolonged product lifecycle. Individually replaceable parts are available for a growing number of our products.

We aim for a lean production minimizing waste and plan our packaging with the same care that goes into our furniture design. Yet, our ultimate focus isn't merely ticking the conscious brand box. It's about aligning every business decision on a continuous journey toward environmental balance and responsible resource use.

Choosing mindo outdoor furniture isn't just a purchase; it's a sustainable stride toward a better environment. Whether for your terrace, retail shop, or contract project, our furniture reflects a commitment to responsibility and sustainability.



Step into the world of mindo moments

Discover us online:



mindo.com



[MindoMoments](#)



[mindo_moments](#)



[mindo2020](#)



[mindo group international](#)



Made for moments

Mindo is a Danish-based outdoor furniture brand with a sustainable perspective on outdoor living. The mindo collection is created for gardens, terraces, and urban spaces. For dining and for lounging. For families, for friends, or for time alone.

Mindo is made for moments.