

mindo 105

Reference no.
30001

Product

Designed with hotels and spa areas in mind, the mindo 105 collection features a unique open-meshed Batyline fabric that offers swift drying when exposed to wet bathing attire or rain showers. The unmistakable blend of comfort and functionality, so characteristic of mindo furniture, is also evident here. The frame's special aluminium profiles are designed with an eye-catching simplicity, establishing the collection as a great companion in any setting. New this season is a matching footstool for the lounge chair and a comfortable sunbed. The sunbed is equipped with small rollers for easy mobility and its easy-to-use backrest mechanism has been patented for its innovative nature.

Designed by

Thomas is a Danish designer with a design studio in the heart of Copenhagen. Central to Thomas' design philosophy is the interaction between a product and its user, his creative process always starts with an understanding of the user's needs. Thomas shares mindo's meticulous attention to detail and materials that are the responsible choice in terms of sustainability and longevity.

"I like the unpretentious nature of the lounge chair, very laid-back. We worked hard on the design, on details that are practically invisible but contribute greatly to the success. A vital detail is the slightly curved diagonal aluminium profile to strengthen the frame."



Dimensions



Lounge chair

Width: 77,5 cm / 30.5"
Depth: 88,5 cm / 34.8"
Height: 72,5 cm / 28.5"
Seat height: 39,0 cm / 15.4"



Sunbed

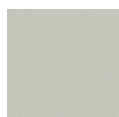
Length: 203,0 cm / 79.9"
Width: 88,0 cm / 34.6"
Height: 37,0 cm / 14.6"



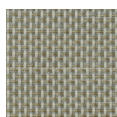
Footstool

Width: 58,0 cm / 22.8"
Depth: 52,0 cm / 20.5"
Height: 38,0 cm / 15.0"

Colours



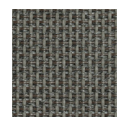
ALU FRAME:
Light Grey 010



FABRIC:
Batyline
Beige mix



ALU FRAME:
Dark Grey 070



FABRIC:
Batyline
Brown/Grey
mix

Links

[Mindo 105 Collection: Lifestyle & product images](#)

www.mindo.com



mindodo 105

Reference no.
30001

Materials

Powder-coated aluminium
Fabric Batyline Eden

Care & Maintenance

ALUMINIUM is a lightweight, yet strong and durable material and ideal for outdoor furniture due to its resistance to corrosion. All our aluminium undergoes a high-quality, solvent-free powder coating for extra protection before being processed. If the coating is damaged due to dents or scratching, moisture can invade and eventually damage the aluminium. Regularly remove dirt with a sponge or soft brush, lukewarm water, and a mild dishwashing detergent. Never use solvents. Thoroughly rinse with clean, fresh water after cleaning to remove all soap and dirt residue.

The **FABRIC BATYLINE EDEN** is manufactured in France from 100% coated polyester, has exceptional outdoor qualities and a unique soft and "wool"-like tactility. Batyline Eden is extremely durable, easy to maintain, and dries quickly after rain showers, making it ideal for hotels and restaurants as well as for private homes. The material is recyclable as well as phthalate free. Use a soft bristle brush to regularly remove dust and dirt, for dried-in stains use lukewarm water and a mild detergent. Do not dry in electric or gas dryers, and avoid ironing the fabric. Excessive heat will shrink the fabric, so we recommend air drying.

Storage

The entire mindodo 105 collection can be left outside during the entire summer season. During the off-season, we recommend storing the chair in a dry and ventilated place, like a covered patio or similar. This will give your furniture maximum protection and make spring cleaning easier. Alternatively, store it together with other furniture under a furniture cover. A cover should be placed in such a manner that it is kept slightly away from the furniture to minimise condensation and allow for free air circulation. Condensation forming under the cover during storage, as well as furniture or cushions that were damp before storage, can cause mould and mildew. Therefore it is vital that the furniture as well as any cushions are completely dry before storage. Checking the stored furniture regularly and letting moisture escape by lifting the cover on dry days is helpful. We recommend storing any loose cushions upright or in a slanted position for maximum air circulation. Placing them with their backside up will protect the more visible parts if staining should occur.

Cover

mindodo 105 lounge chair: Cover no. 1
mindodo 105 footstool: with the lounge chair
mindodo 105 sunbed: Cover no. 9