

# mindo



mindocom

OUTDOOR COLLECTION 2025 - made for moments





# OUTDOOR FURNITURE

mindō

## Designed for the Way You Live

Discover outdoor furniture crafted for you who value quality, longevity, and thoughtful design. Every piece in our mindo collection is made to enhance your space while reflecting a lifestyle of purpose and intention.

Our outdoor furniture combines timeless design with durable materials sourced from trusted global suppliers and shaped through close collaboration with top designers. Each piece is built to last, offering a balance of beauty and resilience that stands up to everyday use and the test of time.

Designed with durability in mind, our goal is to create furniture with repairable components to reduce waste and extend its lifespan. It's an approach that prioritizes thoughtful ownership over quick replacements, letting you invest in items you can enjoy for years to come.

This is furniture for those who value lasting quality, understated elegance, and smart choices that align with their principles. Enhance your outdoor spaces with pieces that look great, perform beautifully, and tread lightly on the planet.



CONTENT

04  
MINDO  
LOUNGE

61  
OUR  
DESIGNERS

63  
MINDO  
DINING

115  
OUR  
RESPONSIBILITY

117  
MINDO  
ESSENTIALS

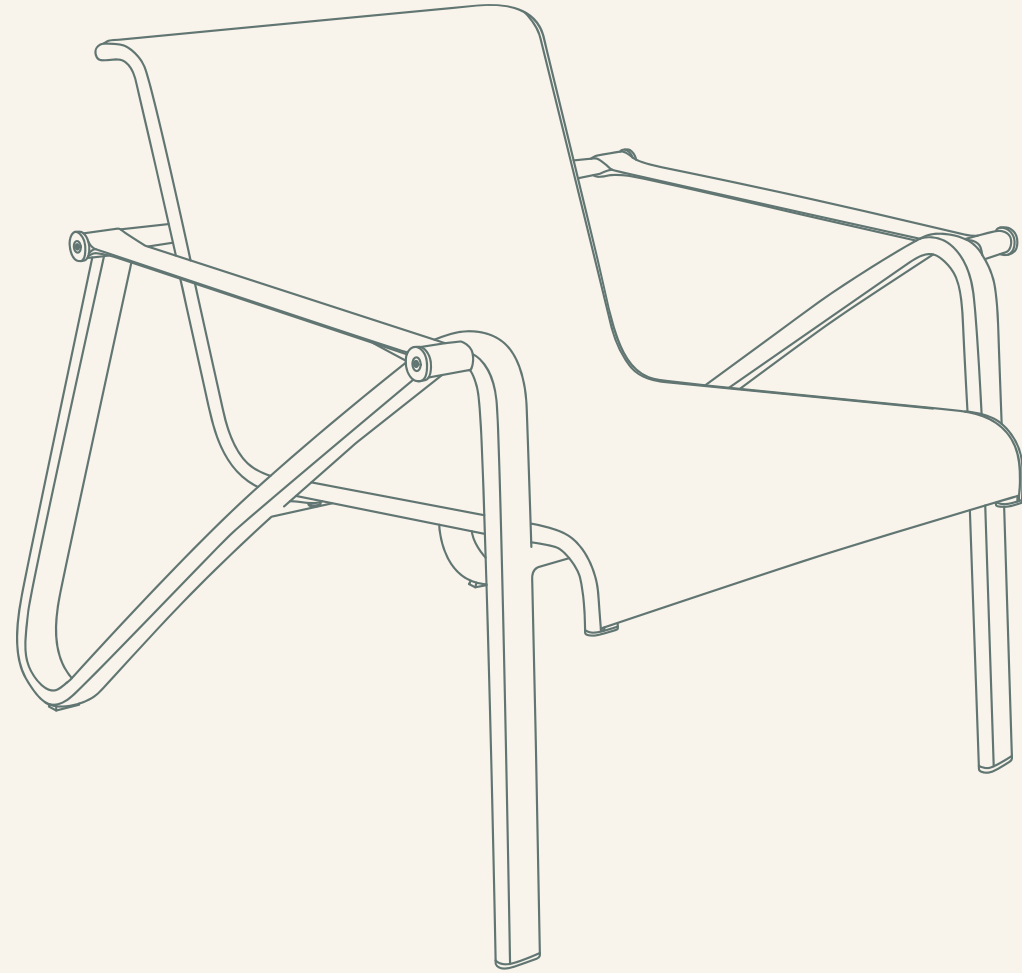
143  
OUR  
MATERIALS



Explore our outdoor collection on the following pages - a versatile range of furniture designed to fit your lifestyle, whether you're navigating a cozy city balcony or hosting gatherings in a sprawling backyard.

Whatever your space, we aim to inspire you to make it yours - whether for unwinding with a good book, sharing meals with loved ones, or enjoying all the moments in between.

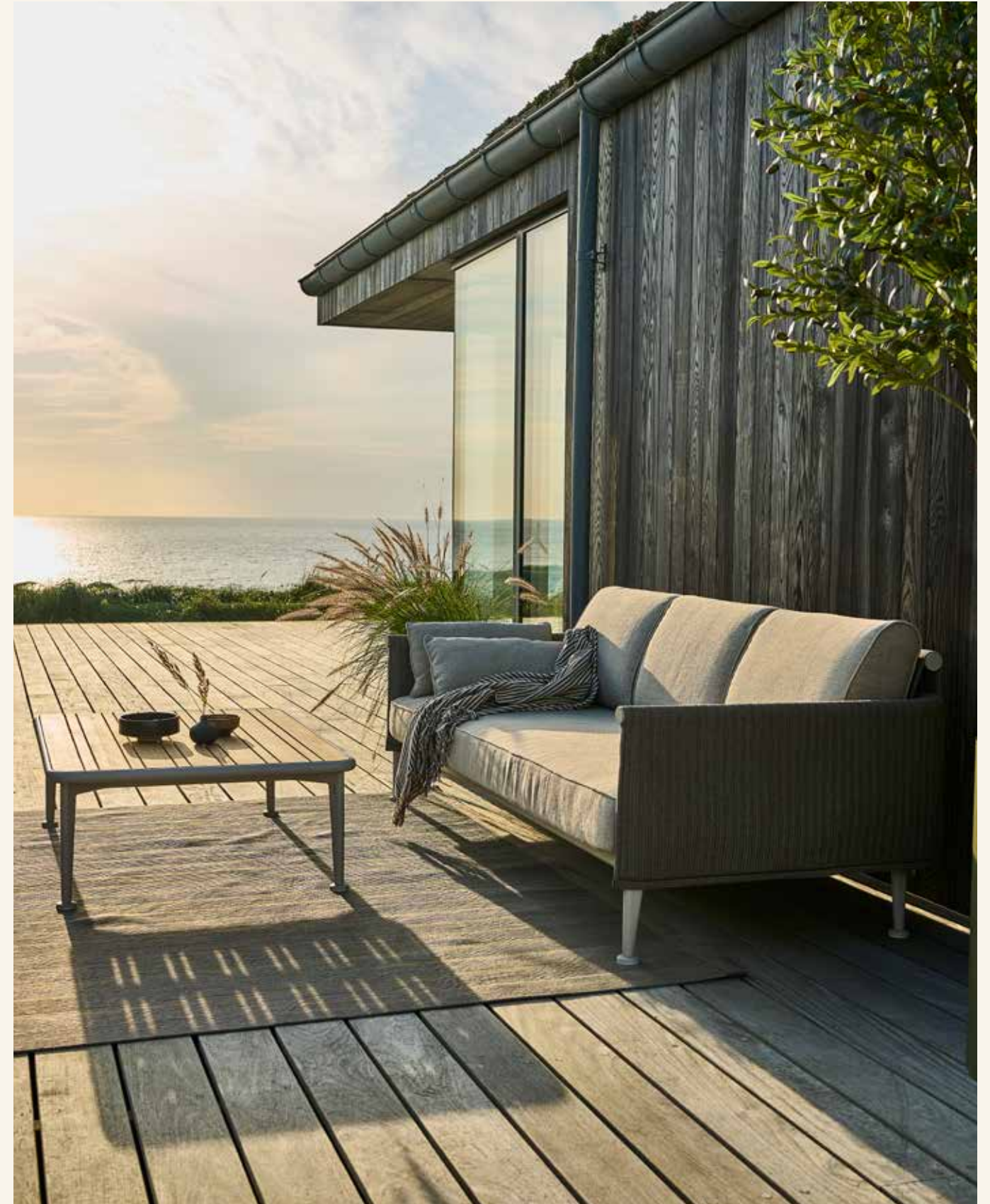




# mindo LOUNGE

Step into our lounge collection - a vibrant blend of style, comfort, and durability that transforms your outdoor space into the ultimate hangout spot. Whether it's a sun-soaked lounge session, a laid-back gathering with friends, or a quiet escape from the chaos, mindo is made to fit your vibe.

Crafted for living, built to last, and designed to elevate your everyday moments, this lounge collection is your invitation to kick back, relax, and own your outdoor space like never before.

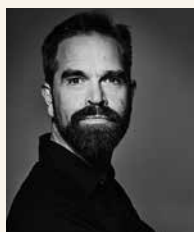




mindò

# 122

"This collection is about precision and purpose - each component fitting seamlessly to create adaptable, enduring lounge furniture that stays with you for the long run."



Designed by:  
**Thomas E. Alken**



Discover mindo 122

mindò 122 coffee table large L115 cm · W79 cm · H36 cm

mindò 122 3-seater sofa L209 cm · W91 cm · H68 cm · SH37 cm

## LOUNGE



LOUNGE

mindob122

Every piece in this collection is thoughtfully designed to stand the test of time - and the elements. A little summer rain? No problem with our weather-resistant cushions.

The removable side and back panels make seasonal care a breeze: When packing things up for the off-season, loosen two small screws on the armrests, unzip the panels underneath the frame, and simply pull them off to store in a dry place. It's quick, and easy, and keeps your furniture looking fresh. When spring rolls around and you're ready to soak up the outdoors again, just reassemble your sofa and enjoy another season of style and comfort. Simple, smart, and built for your lifestyle.



mindob122 side table L54 cm · W31 cm · H58 cm



mindob122 2-seater sofa L149 cm · W91 cm · H68 cm · SH37 cm |  
mindob122 coffee table small L79 cm · W61 cm · H27 cm

LOUNGE



LOUNGE  
mindol  
122



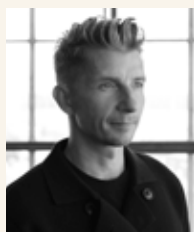
LOUNGE



mindø

# 123

"The design of the mindo 123 lounge set takes its origin in a desire to fuse a classic product typology with rounded softness and generosity in comfort and detailing."



Designed by:  
**Morten Bo Jensen**



Discover mindo 123

mindo 123 side table Ø50 cm · H42 cm

mindo 123 lounge chair L76 cm · W88 cm · H75 cm · SH36 cm (SH44 cm incl. cushion)

## LOUNGE



LOUNGE  
mindo 123



Our new teak collection is all about high-quality design that's as beautiful as it is durable. Made with certified plantation teak and weather-resistant twisted cords, each piece offers effortless style and durability, with minimal upkeep.

But it's not just about looks. We've carefully chosen materials that stand the test of time and implemented eco-conscious practices, like flat-pack shipping, to reduce our environmental footprint.

Mindo 123 is more than just furniture - it's a legacy of comfort, style, and responsibility, made to be enjoyed now and cherished for generations to come.

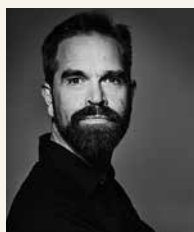


LOUNGE



# mindo 100

"Good design, to me, means creating pieces that last - time-less, functional, and built to stay relevant. Comfort is a must for furniture, but so is sustainability - both in the materials we choose and how we make them. That's why I made sure the teak slats are individually replaceable, adding to the long life of this lounge group."



Designed by:  
**Thomas E. Alken**



mindo 100 lounge group L250 cm · W250 cm · H64 cm · SH39 cm

mindo 100 coffee table L83 cm · W83 cm · H40 cm

## LOUNGE



Discover mindo 100

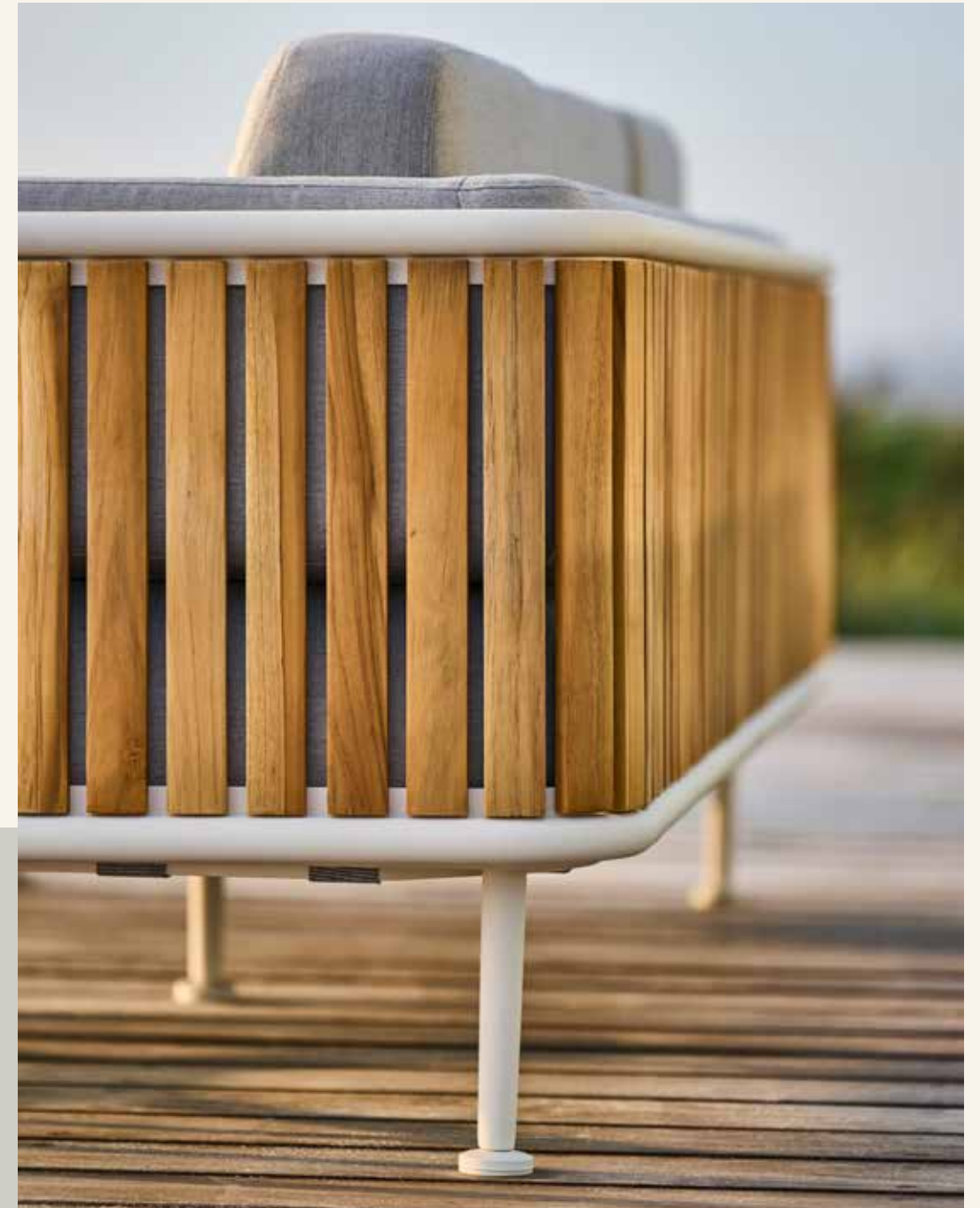


# LOUNGE mindo 100

The mindo modular lounge collection brings bold style and laid-back comfort to any outdoor space. With its rounded aluminium frame and warm teak sides, it looks great and feels even better - no harsh edges, just smooth, tactile design. The memory foam cushions are as comfy as your favorite indoor sofa, and weather-resistant fabrics mean they're good to go, rain or shine.



**mindo 100 2-seater module** L160 cm · D90 cm · H64 cm · SH39 cm | **mindo 100 coffee table round** Ø58 cm · H47 cm



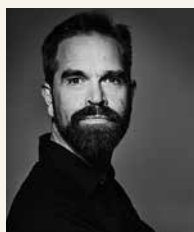
**mindo 100 lounge chair** L86 cm · D90 cm · H64 cm · SH39 cm

## LOUNGE



# mindo 101

"The mindo 101 lounge chair is one of my favorites. I wanted it to feel open and inviting, with a bold, Scandinavian edge. The curved teak slats aren't just a detail - they're replaceable, so the chair stays with you for years. It's about creating something comfortable and building it to last."



Designed by:  
**Thomas E. Alken**



mindo 101 lounge chair L72 cm · D72 cm · H75 cm · SH36 cm



Discover mindo 101

Meet the mindo 101 lounge chair - a perfect mix of bold Scandinavian style and unbeatable comfort. Its open, striking backrest lets you kick back in whatever way feels right, whether you're chilling solo or with friends. The curved teak slats on the seat? Individually replaceable, so your chair stays fresh for the long haul. Built with top-notch, eco-friendly materials, it's designed to last and look amazing while doing it. This isn't just furniture - it's a statement piece for your outdoor life and your values.



## LOUNGE



# mindo 107

"On a trip to Italy with mindo, I discovered the art of rope weaving and twisting. Inspired, I designed a lounge group highlighting its texture, strength, and versatility. By pairing warm teak with sleek aluminium, I created a bold balance of organic curves and sharp geometry - timeless yet striking."



Designed by:  
**Rikke Frost**



Discover mindo 107

mindo 107 3-seater sofa L232 cm · D88 cm · H66 cm · SH42 cm

mindo 107 coffee table L126 cm · W53 cm · H38 cm | mindo 107 footstool Ø71 cm · H40 cm

LOUNGE



# LOUNGE mindo 107

The mindo 107 lounge group combines organic shapes with the perfect mix of materials: tactile rope, sleek aluminium, warm teak, and soft fabric. Subtle details make a statement, while loose back cushions and the unique tapered daybed invite you to relax, unwind, and recharge. With five plush cushions, it's ideal for reading, napping, or just lounging in style - transform your terrace into a green living room and blur the lines between indoors and out.



mindo 107 daybed L150 cm · D155 cm · H76 cm · SH42 cm



mindo 107 lounge chair L95 cm · D77 cm · H66 cm · SH42 cm |  
mindo 107 side table Ø57 cm · H46 cm

## LOUNGE

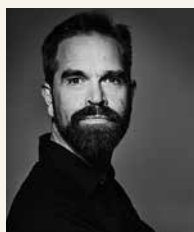






# mind 105

"I like the unpretentious nature of the lounge chair, very laid-back. We worked hard on the design, on details that are practically invisible but contribute greatly to the success. A vital detail is the slightly curved diagonal aluminium profile to strengthen the frame."



Designed by:  
**Thomas E. Alken**



Discover mindo 105

mindo 105 lounge chair L77 cm · D88 cm · H72 cm · SH39 cm | mindo 105 footstool L58 cm · D52 cm · H38 cm

## LOUNGE





The mindo 105 lounge chair makes life simple. Its quick-dry fabric means no waiting around after rain or a swim - just sit back and relax. The lightweight aluminium frame is easy to move, so you can switch up your space anytime. Plus, its timeless design fits anywhere, blending style with zero stress. Comfort, convenience, and cool vibes - effortless living, sorted.



LOUNGE



# mindo 106

"We designed the mindo 106 to engage your senses and elevate your well-being in a cozy, inviting space. The carefully woven braid cradles you with a soothing embrace, while giving you a peek at the sleek structure beneath. It's all about comfort, style, and that ultimate relaxed vibe."



Designed by:  
**Odosdesign**



Discover mindo 106

mindo 106 footstool L74 cm · D59 · H43 cm | mindo 106 coffee table L120 cm · W60 cm · H30 cm

mindo 106 2,5-seater sofa L180 cm · D90 cm · H78 cm · SH43 cm

## LOUNGE



# LOUNGE mindo 106

This lounge group hits all the senses with its bold, curved frame and rich, textured rope. The wide braided rope weaves seamlessly in and out from the sleek aluminium profiles, creating a tactile and eye-catching design. The high-back chair embraces you with a cozy, secluded feel - perfect for open spaces like parks and gardens. Made from 100% recyclable fibers, the rope is weather-resistant, strong, and soft with a wool-like texture. The unique color depth comes from blending different tones for a striking finish.



mindo 106 high back lounge chair L90 cm · D90 cm · H120 cm · SH43 cm | mindo 106 lounge chair L90 cm · D90 cm · H78 cm · SH43 cm



## LOUNGE



mindò

# 118

"We set out to create an iconic armchair for outdoor living - where creativity meets innovation for a truly avant-garde design. The result? A statement piece that redefines outdoor comfort and style."



Designed by:  
**Odosdesign**



Discover mindò 118



LOUNGE



LOUNGE  
mindo **118**



mindo 118 high back lounge chair L79 cm · D94 cm · H112 cm · SH42 cm | mindo 118 side table Ø50 cm · H45 cm

This lounge chair isn't just for sitting - it's a retreat. The high backrest gives you total privacy, while the transparent material plays with light and shadows for a striking effect. Sink into the weather-resistant cushions and feel the stress melt away. The solid teak legs ground the sleek aluminium frame, adding bold warmth. The side table? A total standout - thin aluminium meets sturdy teak for a contrast that pops. Relax, recharge, and do it in style.



LOUNGE



mindó

# 114

"I was working on an indoor version of this chair for my Master's at KADK when mindo reached out with the idea of taking it outdoors. After three years of refining the design, it's wild to see it out there, sold globally. A real thrill to see it come to life on such a big stage."



Designed by:  
**Christian Juhl**



mindó 114 lounge chair L76 cm · D71 cm · H86 cm · SH43 cm

The mindo 114 lounge chair is here to change the game. Made from innovative 3D fabric spun from recycled plastic bottles, these chairs aren't just unique - they're part of the movement toward an eco-conscious future. With a sleek, powder-coated aluminium frame and a stainless steel backrest that gives you support no matter your size, comfort and style go hand in hand. Bold, comfortable, and designed for the future - this is how we make conscious choices feel good.



## LOUNGE



Discover mindo 114



mindó

# 113

"The design had to be straightforward and approachable - something that feels right wherever you put it, without demanding constant attention. It's all about keeping things simple, so you can kick back and enjoy the comfort, with zero hassle."

Designed by:  
**mindó design**



mindó 113 lounge chair L79 cm · D87 cm · H92 cm · SH41 cm

The ultimate no-frills lounge chair that's all about comfort and practicality. Perfect for hotels, spas, restaurants, or even ski lodges and summer houses - it's inviting, durable, and low-maintenance. With a powder-coated aluminium frame and open mesh that lets rainwater drain fast, you can leave it outside year-round, without a worry. Add the weather-resistant cushions when you want extra comfort, and it's good to go, no matter where you place it.



## LOUNGE



Discover mindó 113



# OUR DESIGNERS

AT MINDO, WE ARE PROUD OF THE RELATIONSHIP WE HAVE WITH OUR DESIGNERS. WE SHARE A LOVE FOR AESTHETICS, FUNCTIONAL DESIGN, AND HIGH CRAFTSMANSHIP. AND WE SHARE A PASSION FOR DETAILS AND A MINDSET, WHERE WE AIM TO PUSH “GOOD ENOUGH” TO SOMETHING BETTER.



## Rikke Frost, Denmark

Rikke, a Danish designer, has run her design studio in Århus since 2004. When designing, Rikke focuses on the relevance and longevity of a product and its impact on our environment, both now and in the future. Rikke's designs for mindo are minimal without ever losing comfort, functionality, or aesthetic magic. Her furniture has a playful quality to it, which she emphasizes with thoughtful details for the user to discover and engage with.



## Christian Juhl, Denmark

Christian is a gifted design talent who has won numerous prestigious prizes, amongst them the renowned Finn Juhl design prize (there is no family connection). He feels that part of his strength as a furniture designer stems from his background in carpentry. For mindo, Christian used innovative 3D-knit, a fabric made from recycled bottles to create the unique mindo 114 chairs. Central to Christian's design philosophy is the aim that his furniture serves a purpose and is functional, regardless of its sculptural aesthetic.



## Odosdesign, Spain

The Valencia-based design agency Odosdesign, namely Ana Segovia and Luis Calabuig, are dedicated to integrating creativity and communication in product design. In their collaboration with mindo, their success lies in the ability to understand and translate our vision into furniture that truly embodies our initial ideas. By emphasizing the core element of each creation and placing focus on comfort and usability, their iconic designs accurately convey our mindo mindset.



## Thomas E. Alken, Denmark

Thomas is a Danish designer with a design studio in the heart of Copenhagen. Central to Thomas' design philosophy is the interaction between a product and its user, his creative process always starts with an understanding of the user's needs. Thomas shares mindo's meticulous attention to detail and materials that are the responsible choice in terms of sustainability and longevity. Privately, Thomas draws inspiration from the dynamic interplay between the established and modern design scene of the bustling city, as well as his passion for simple living in the countryside.



## Jesper K. Thomsen, Denmark

Jesper is a versatile talent, both a creative industrial designer and a detail-oriented inventor. His dedication to any product he works with stems from his holistic approach to innovation and problem-solving. His own aversion to handling and storing large extension plates when hosting many guests led him to the ingenious design of a table with an extendable top. This unique solution resulted in a patent in cooperation with mindo and the backbone of a large range of extension tables and benches, namely the mindo 111 series.



## Morten Bo Jensen, Denmark

Danish designer, Morten Bo Jensen, founder and Chief Designer at GROUNDWORK Studio in Copenhagen, shares a strong passion with mindo's core values in pursuing designs with longevity, innovation, and relevance. For the mindo 123 collection, Morten seamlessly blends Danish and Japanese design traditions. The minimal, functionally derived shapes, and the use of braided cords, embody Danish influences, with the diamond-shaped tabletop woodwork drawing inspiration from the intricate Japanese Kumiko craftsmanship.

## Thomas Overby, CEO, mindo

Our partnership with our designers is a defining factor of our company and where all our dreams are boiled down into concrete physical designs. We aim to be relevant and move with the times, while staying connected to what we know works from our collective experience. New designs are always a mix of ideas grounded in existing possibilities. Together with our designers, we push ourselves to make the most of what we have, creating products that are not only relevant today but built to last for years. We're all driven by a passion to do our best, we care about every design, and hope they will exceed expectations - just doing a little more than you expect.





# mindo DINING

Welcome to the mindo dining collection - where style meets comfort, and every meal feels like an experience. Whether it's a laid-back dinner with friends, a spontaneous brunch, or just a peaceful moment to yourself, mindo's got your back.

Made to endure, crafted for comfort, and designed to elevate how you eat, share, and connect - this is dining furniture built for today's world.

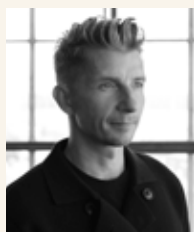




mindø

# 123

"When designing the mindø 123 dining set we had a strong focus on functionality whilst wanting to compose a delicate balance between the warm teak, the natural cord and the softly padded fabric."



Designed by:  
**Morten Bo Jensen**



Discover mindø 123

DINING



DINING

mindo 123

The mindo 123 dining collection merges Danish and Japanese craftsmanship traditions to make the design relevant for many years. Made from teak, the chair and table are built to last, with the wood developing a beautiful silver-grey patina over time. The chair's braided cord and the table's intricate Kumiko-inspired woodwork combine minimalist style with functional beauty. The minimalistic approach stretches through to the packaging. Mindo 123 is designed to be shipped flat-packed and easy to assemble or disassemble. This collection is our best effort to build on solid traditions while adding innovative ideas for relevant and long-lasting style.



mindo 123 dining table Ø130 cm · H74 cm | mindo 123 dining chair L59 cm · D68 cm · H81 cm · SH42 cm (SH47 cm incl. cushion) · AH63 cm

DINING



# mindo 101

"The mindo 101 chair is the result of a big dream and a lot of passion. We went back and forth, tweaking even the smallest details, and pushing each other creatively. It was a truly collaborative effort between the talented craftsmen, mindo and me. It's the kind of design that comes from challenging the process and putting in the work."



Designed by:  
**Thomas E. Alken**



mindo 101 dining table w. ceramic top L222 cm · W90 cm · H74 cm

mindo 101 dining chair L58 cm · D57cm · H77 cm · SH47 cm



Discover mindo 101

## DINING



# DINING mindo 101

The mindo 101 dining collection isn't just furniture - it's designed for moments that matter. With sleek, modern lines and top-quality materials, these tables and chairs are perfect for making memories with friends and family. The ceramic insert in the certified teak table top is both beautiful craftsmanship and practical too, handling hot and cold items with ease. Plus, the woven backrest on the chairs keeps you comfortable no matter how long the dinner runs. It's all about style, durability, and making your space work for you.



mindo 101 dining table round Ø120 cm · H75 cm | mindo 101 dining table rectangular L222 cm · W90 cm · H75 cm



## DINING



# mindo 111

"My goal was to create a game-changing extension table - something that not only looks amazing but actually works for everyone. This patented design took years of trial and error, a ton of patience, and some real grit. But with mindo's support, we finally nailed it. It's all about pushing the boundaries and getting it just right."



Designed by:  
**Jesper K Thomsen**



mindo 111 extension table large L263 cm · W100 cm · H76 cm - extended L327 cm



Discover mindo 111

## DINING



DINING

mindo **111**



mindo 111 balcony table L162 cm · W60 cm · H74 cm – extended L200 | mindo 111 bench small L139 cm · W42 cm · H46 cm – extended L173 cm



DINING



DINING

mindo 111

The mindo 111 extension table is a true innovation – completely unmatched in the outdoor furniture market. Made from powder-coated aluminium, it's weather- and scratch-resistant, needing just minimal upkeep. The patented extension system lets you effortlessly expand the table and benches without any extra plates. Creating space for more guests? It's as simple as that.



mindo 111 dining table L162 cm · W90 cm · H74 cm – extended L200 cm



DINING



mindó

# 114

"The chair uses 3D knitting to create a fabric that's custom-shaped, strong, and waste-free. Plus, it's made from 100% recyclable polyester, so it's built for an eco-friendlier future. That's important for me."



Designed by:  
**Christian Juhl**



Discover mindo 114

mindó 114 dining table oval L215 cm · W95 cm · H74 cm

mindó 114 dining chair L55 cm · D58cm · H86 cm · SH50 cm

## DINING



DINING

mind  
114



mindo 114 dining table round Ø95 cm · H75 cm

DINING



DINING

mindob114

The mindo 114 dining chairs are all about bold design and smart innovation. Crafted with a cutting-edge 3D fabric made from recycled fibres, they deliver comfort and eco-friendliness in one. The powder-coated aluminium frame and flexible stainless steel backrest are built to handle everything - from casual dinners to epic feasts. Pair them with the collection's striking cast-aluminium dining tables, and you've got a setup that's as stylish as it is durable.



mindo 114 dining table oval L215 cm · W95 cm · H75 cm

DINING



# mindo 121

"I wanted an outdoor dining set that combines quality, smart design, and style. The folding chair and table are compact enough to store neatly in your shed during winter. For hotels and restaurants, it's the perfect solution - elegant, practical, and easy to pack away each night."



Designed by:  
**Jesper K Thomsen**



mindo 121 foldable bistro table L75 cm · W75 cm · H75 cm

mindo 121 foldable dining chair L48 cm · D60 cm · H83 cm · SH45 cm



Discover mindo 121

## DINING



DINING

mindo 121

The mindo 121 series brings modern, eco-conscious design to small outdoor spaces. Its foldable, space-saving design pairs functionality with sensibility. Bamboo - a durable, renewable resource - shapes the seat, back, and tabletop, combining strength with style. Regular care ensures the bamboo slats endure for years, while their replaceable design extends the furniture's lifespan indefinitely. Thoughtfully crafted, this collection balances space, style, and longevity, earning the Red Dot Award 2024 for the bamboo folding chair. For high-traffic areas, the all-aluminium folding chair offers a sleek, no-maintenance solution built to last. The perforated seat and back drain rainwater and provide airy comfort.



mindo 121 foldable aluminium dining chair L48 cm · D60 cm · H83 cm · SH45 cm

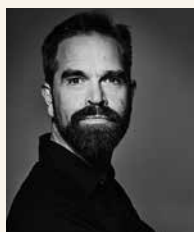
DINING



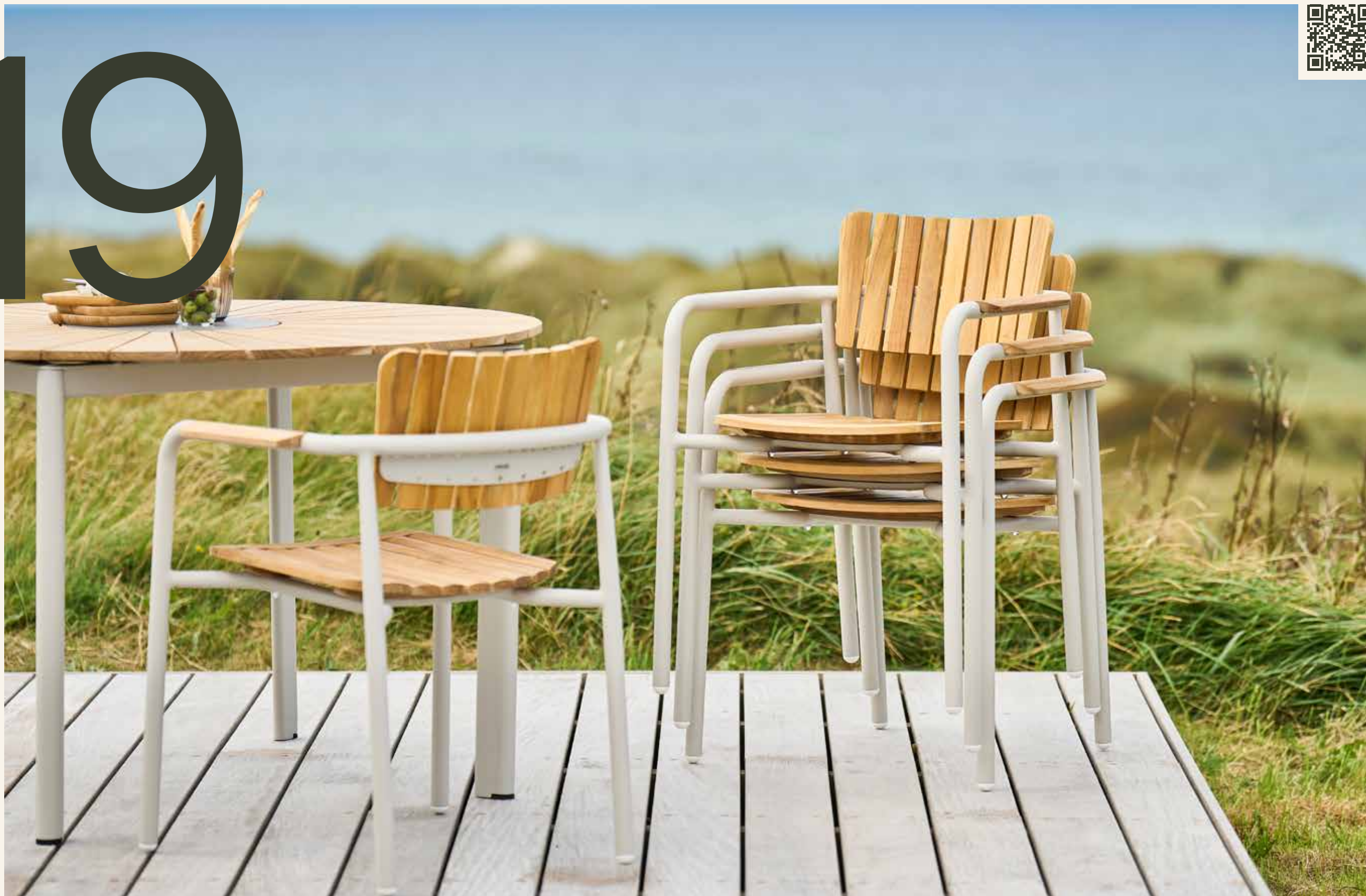
mindó

# 119

"I've learned from experience that simple things take time. With this chair, I am trying to combine classic lines with a modern twist. Details like the armrest give the chair its uniqueness."



Designed by:  
**Thomas E. Alken**



Discover mindo 119

mindó 119 dining chair L60 cm · D56 cm · H79 cm · SH45 cm

DINING



DINING

mindo 119

Meet the mindo 119 dining chair - your go-to garden companion. It's comfy, stackable, and a breeze to maintain thanks to its smart material choices. The untreated teak slats naturally age into a sleek silver-grey, keeping its timeless vibe alive. Thoughtfully curved seat and back slats, plus armrests, make every sit feel just right. And if life happens? No worries - the teak slats are replaceable, so this chair sticks with you for the long haul.



DINING



mindó

# 112

"Our objective was to create a maintenance-friendly chair for outdoor use, one that doesn't seek attention other for its functionality."

Designed by:  
**mindó design**



mindó 112 dining chair L50 cm · D57 cm · H82 cm · SH47 cm

We designed this chair to do it all - durable, low-maintenance, and effortlessly stylish. Made from powder-coated aluminium, it shrugs off the elements and keeps its sleek look with barely any upkeep.

Fully stackable, it saves space and makes storage a breeze. Available in three signature mindó colors, it fits any vibe - modern, classic, or somewhere in between. Pair it with any table, and you've got a versatile, good-looking setup that just works.



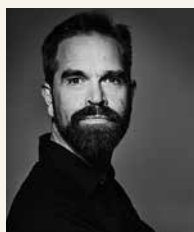
Discover mindó 112

## DINING



# mindo 102

"When on the go or to break away from a traditional outdoor dining setting, I prefer the relaxed and versatile bar table and chair. Elevating myself above standard table height provides a new perspective on my surroundings. When time is short, it's a less formal way to enjoy a quick espresso on the terrace."



Designed by:  
**Thomas E. Alken**



mindo 102 bar table square L81 cm · W81 cm · H105 cm

mindo 102 bar chair L52 cm · D52 cm · H108 cm · SH78 cm



Discover mindo 102

## DINING



# DINING mindo 102

Built on the sleek design of the mindo 101 dining chair, the bar chair brings both elegance and comfort to any setting. Perfect for hotels, restaurants, and clubs, it's also finding its way into private homes as high dining becomes the go-to trend for relaxed, stylish living.

Pair these bar chairs with a matching bar table from the collection, featuring durable tops in certified plantation teak or low-maintenance high-pressure laminate. Practical, versatile, and effortlessly chic.



mindo 102 bar table rectangular L163 cm · W81 cm · H105 cm

## DINING



# RE SPON SIBILI TY

mindó

At mindo, we create furniture that enhances your space and aligns with a more eco-conscious approach.

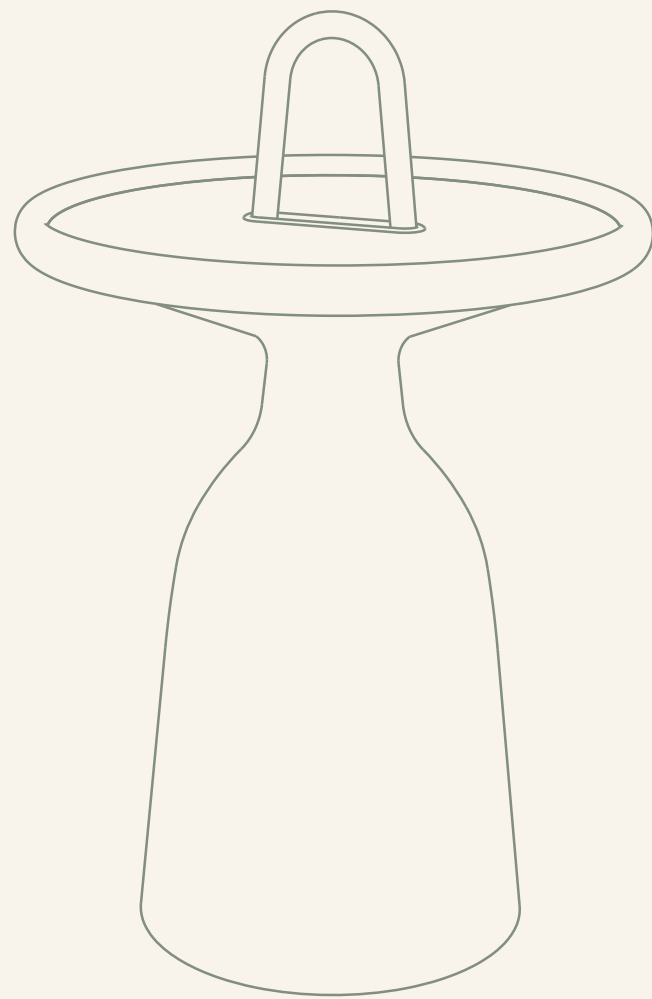
Great design shouldn't just look good; it should last. That's why we focus on timeless, functional pieces made with high-quality materials and smart, repairable features. Instead of replacing, you can refresh, extending the life of your furniture and cutting down on waste.

We're rethinking how we work, from sourcing more local materials to shortening supply chains and optimizing packaging. It's all about reducing our footprint while delivering the same durability, premium quality, and faster lead times.

For us, sustainability is a journey. Every decision we make - choosing replaceable teak slats or designing rope panels you can switch - brings us closer to better balance. And for you? It's about owning furniture that feels right and lasts through the years, from the day you bring it home to the day you pass it on.

With mindo, you're choosing furniture that fits your space, your values, and a smarter future.





# mindo ESSENTIALS

The quiet heroes of outdoor living, our Essentials collection brings versatility and purpose to your space. Footstools, side tables, sunbeds, and benches - each piece is designed with the same care as our dining and lounging furniture.

Durable, timeless, and functional, these accessories adapt to your needs. Whether it's a bench for extra seating, a side table for your coffee, or a sunbed for lazy afternoons, Essentials make all the difference, proving that small details create big impact.





mindó

# 106

"Designing for an existing collection is always a rewarding challenge - it's where we test if a design can truly scale. With the 106 sunbed, we kept the same core principles from the lounge group, bringing the same comfort and style to a new form."



Designed by:  
**Odosdesign**



mindó 106 sunbed L201 cm · W81 cm · H36 cm

Designed to complement the rest of the mindó 106 collection, the sunbed offers a comfy mattress and a clever backrest that adjusts effortlessly without you having to move. Whether you're lounging with a good book or reclining flat to soak up the sun, this sleek sunbed does it all with style.



Discover mindó 106

## ESSENTIALS



mindø

# 117

"I set out to create an aesthetic balance between two very different materials, cool aluminium and warm teak. Both materials rely on and use the other for definition and tactility. The pattern and direction of the teak slats create playfulness and counter the strong lines of the frame. For environmental reasons, I put a major focus on creating a flatpack to take up minimal freight space."



Designed by:  
**Rikke Frost**



Discover mindo 117

mindo 117 small bench L140 cm · W47 cm · H45 cm

## ESSENTIALS



DINING

mindo 117

Benches are the unsung heroes of any space, and the mindo 117 benches are no exception. Whether inside or out, they fit perfectly wherever you want to pause, soak in a view, or just take a breather. Built to last with powder-coated aluminium and teak, these benches come in two sizes. The larger bench has a standout feature - a bowl for your favorite herbs or ice for chilling wine. The smaller version keeps it clean and minimalist, adding effortless style to any setting.



mindo 117 large bench L180 cm · W47 cm · H46 cm

ESSENTIALS



# mindo 105

"Designing within an existing collection is always exciting. The unique, minimalistic frame of the Mindo 105 lounge chair was a key feature, and I created the sunbed around that sculptural element - keeping the same comfort and style in a fresh form."

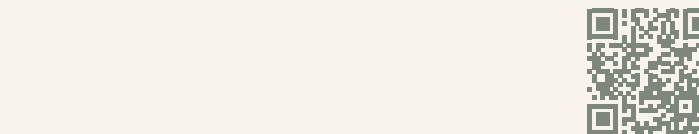


Designed by:  
**Thomas E. Alken**



mindo 105 sunbed L203 cm · W88 cm · H37 cm

With its minimalistic design, the mindo 105 sunbed blends effortlessly into any environment, adding comfort without dominating the space. The unique Batyline fabric dries quickly after exposure to water, while the sleek aluminium frame offers a simple yet striking look. Equipped with small rollers for easy mobility and a patented backrest mechanism, this sunbed is both functional and stylish, easily adjusting from a reading to a reclining or sunbathing position."



Discover mindo 105



## ESSENTIALS



# mindo 104

"This table is all about organic, smooth curves - from the handle to the removable top, every line is gentle. Even the way light plays on its surface gives it a soft, sculptural feel. The removable top bridges the gap between inside and outside, adding a touch of functionality to its beauty."



Designed by:  
**Thomas E. Alken**



mindo 104 side table Ø40 cm · H60 cm

The mindo 104 small side table is all about elegance and ease. Its distinct handle makes it light and simple to move, so finding the perfect spot for your coffee is effortless. The removable top doubles as a serving tray, helping you go from kitchen to patio in style. Whether you match it tone-on-tone with your furniture or opt for a contrasting color to make it pop, this versatile table fits right in.



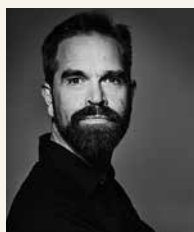
Discover mindo 104

## ESSENTIALS



# mindo 103

"This daybed is all about comfort and well-being. We wanted a minimalistic design that stands strong while blending into its surroundings, offering a peaceful escape without unnecessary distractions."



Designed by:  
**Thomas E. Alken**



mindo 103 daybed L197 cm · W84 cm · H39 cm

A bold yet simple daybed, ideal for a rooftop terrace or a quiet garden retreat. Its clean, minimal design fits perfectly with other mindo pieces, making it an easy addition to any space. The weather-resistant cushion sits on a specialized webbing structure, providing exceptional comfort. Choose from a warm grey or off-white frame, paired with a matching cushion, to bring a calming, effortless vibe to any outdoor area.



Discover mindo 103

## ESSENTIALS



# mindo 108

"I wanted these poufs to feel playful and engaging - like dependable companions. They're mobile, adaptable, and built to be as strong as they are versatile."



Designed by:  
**Rikke Frost**



mindo 108 large pouf L74 cm · W65 cm · H35 | mindo 108 small pouf L40 cm · W42 cm · H48 cm

Whether you're making the most of a small outdoor space or need extra seating in seconds, these versatile poufs have you covered. A lightweight aluminium core makes them easy to move but sturdy enough to sit on. Quick-dry foam is beneath the high-quality outdoor fabric, ready to handle unexpected summer showers. Their thoughtfully chosen colors and textures add a harmonious touch to any setting.



Discover mindo 108

## ESSENTIALS



# mindo 109

"Simplicity meets function without losing the magic. The clean silhouette harmonizes with the mindo 108 poufs, evoking the organic elegance of a petal or leaf."



Designed by:  
**Rikke Frost**



mindo 109 side table L48 cm · W35 cm · H50 cm

Effortlessly stylish, endlessly versatile. The mindo 109 side table brings bold energy to your space with its organic shape, mindo color palette, and year-round functionality. Teak slats radiate natural warmth and texture, perfectly balanced by the sleek, durable aluminium frame.



Discover mindo 109

## ESSENTIALS



mindo

# 120

"A classic reinvented. Easy to assemble, the thoughtful design enables flat-pack shipping to reduce emissions without losing its innovative edge."



Designed by:  
**Odosdesign**



mindo 120 trolley L98 cm · W61 cm · H80 cm

Classic reimagined with a purpose. The mindo 120 serving trolley combines sleek design, and smart functionality. Built from custom aluminium sheets, its practical perforations effortlessly drain rainwater, while the soft-shaped frame and handle offer both style and comfort. Large, sturdy wheels make it easy to glide from patio to living room, seamlessly adapting to indoor-outdoor living.

Designed to ship flat-packed, the trolley minimizes carbon impact without compromising quality - a step forward for climate-conscious design.



Discover mindo 120

## ESSENTIALS



# mindo COVERS

"When designing the covers, a dark color was never an option. The sand-coloured tone felt right - neutral and calming, keeping the patio a pleasing sight, even in winter."

Designed by:  
**mindo design**



Elegant protection for every season. Mindo's sand-toned furniture covers are thoughtfully designed to shield against dust, dirt, and rain.

Made from durable polyester with a secure drawstring bottom, they stay in place even during windy weather. Available in various sizes, these covers are tailored to fit different mindo pieces, offering practicality with an understated style.

Subtle, functional, and always reliable.



Discover mindo covers

## ESSENTIALS



# mind QUALITY

Quality drives everything we do. We're committed to creating exceptional outdoor furniture with materials that stand up to the elements - durable, weather-resistant, and eco-friendly. Every piece is built for lasting performance. Quality is about precision, maintaining the same high standards through every unit and every production cycle.

Quality is about choosing materials that work in all climates - whether it's the heat of Australia, the rain of Norway, the humidity of India, or Denmark's shifting weather. And speaking of different countries, quality is also about our packaging, ensuring each item arrives safely, wherever it's headed in the world.

Quality is about design. Every piece is crafted to perform flawlessly and look great - timeless, functional designs that elevate any space. While materials like teak and aluminium may react differently to the weather, our designers and craftsmen have the expertise to make them work together, balancing their unique qualities to create pieces that seamlessly combine strength and style.

At mindo, quality isn't just a claim. It's in every detail.



Discover mindo quality

# QUALITY



# mindo DETAILS

## Spotted the perfect dining chair or lounge group?

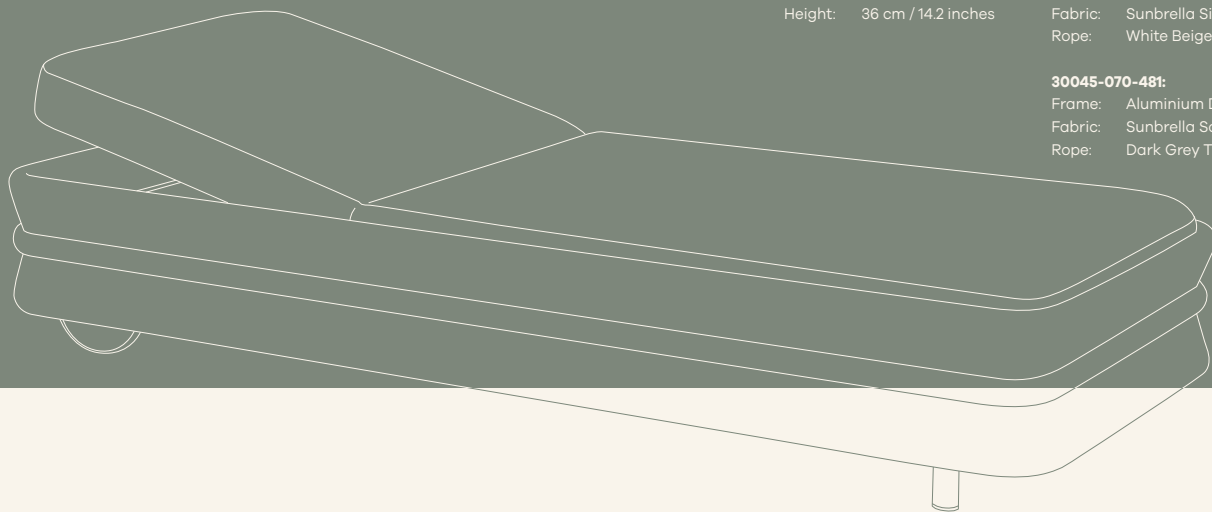
Scan the QR code under each collection for quick access to dimensions, colour options, and the story behind the design. Prefer to explore at your own pace? Visit our website to discover collections and connect with a dealer nearby. Outdoor living just got easier.

### mindo 106 Sunbed

Length: 201 cm / 79.1 inches  
Width: 81 cm / 31.8 inches  
Height: 36 cm / 14.2 inches

**30045-010-049:**  
Frame: Aluminium Light Grey LH-010  
Fabric: Sunbrella Silver Grey ML00049  
Rope: White Beige TT00587

**30045-070-481:**  
Frame: Aluminium Dark Grey LH070  
Fabric: Sunbrella Sooty ML00481  
Rope: Dark Grey TT00589



This catalogue is printed on FSC-certified paper. The printing company Kopa, certified under FSC C103625, upholds environmentally friendly printing practices.

Mindo is not responsible for any printing errors in the catalogue and reserves the right to change product designs if deemed necessary.

Instagram

#MINDO\_MOMENTS



DISCOVER US ONLINE



MINDO.COM



MINDOMOMENTS



MINDO\_MOMENTS



MINDOOUTDOOR  
FURNITURE



MINDO GROUP  
INTERNATIONAL



## Made for moments

Mindo is a Danish-based outdoor furniture brand with an eco-friendly perspective on outdoor living.

The mindo collection is created for gardens, terraces, and urban spaces. For dining and for lounging. For families, for friends, and for time alone.

Mindo is made for moments.

**mindob**