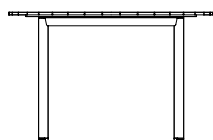
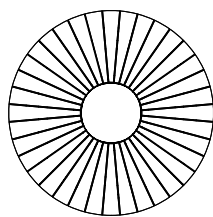




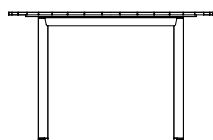
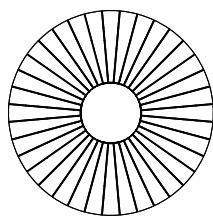
minddo 101 Tables & Chairs

Design by Thomas E. Alken

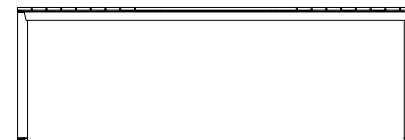
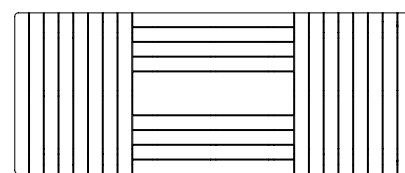
Dimensions



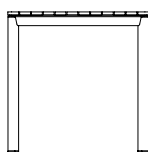
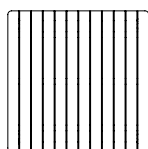
30043-1 Dining table w/teak
 Ø 120,0 cm / 47.2" H 75,7 cm / 29.8" **Net/**
Gross weight 21,5 kg / 25,3 kg **Volume**
 0,15 m³ **Unit** 1 pc



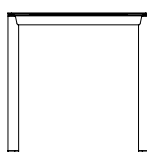
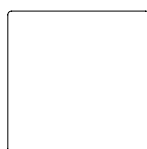
30062-1 Dining table w/teak
 (only FCL purchases)
 Ø 100,0 cm / 39.4" H 75,7 cm / 29.8" **Net/**
Gross weight 16,9 kg / 21,1 kg **Volume**
 0,15 m³ **Unit** 1 pc



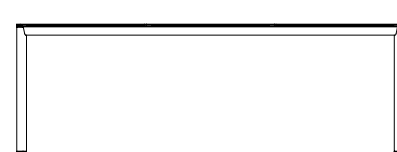
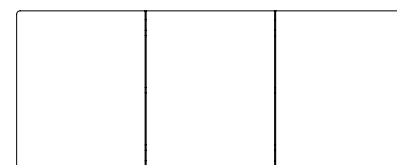
30042 Dining table w/teak
 L 222,0 cm / 87.4" W 90,0 cm / 35.4"
 H 75,0 cm / 29.5" **Net/Gross weight** 35,9 kg /
 42,6 kg **Volume** 0,24 m³ **Unit** 1 pc



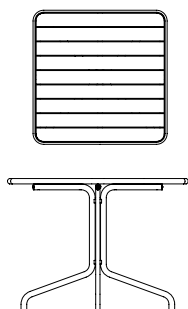
30055 Dining table w/teak
 L 74,0 cm / 29.1" W 74,0 cm / 29.1"
 H 75,0 cm / 29.5" **Net/Gross weight** 14,8 kg /
 16,8 kg **Volume** 0,07 m³ **Unit** 1 pc



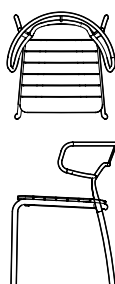
30055-1 Dining table w/ceramic
 L 74,0 cm / 29.1" W 74,0 cm / 29.1"
 H 74,0 cm / 29.1" **Net/Gross weight** 16,1 kg /
 19,6 kg **Volume** 0,07 m³ **Unit** 1 pc



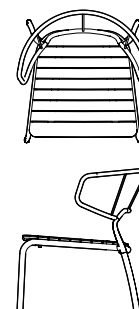
30042-1 Dining table w/ceramic
 L 222,0 cm / 87.4" W 90,0 cm / 35.4"
 H 74,0 cm / 29.1" **Net/Gross weight** 44,3 kg /
 50,7 kg **Volume** 0,24 m³ **Unit** 1 pc



30061 Café table w/teak
 L 74,7 cm / 29.4" W 74,7 cm / 29.4"
 H 74,0 cm / 29.1" **Net/Gross weight** 9,8 kg /
 12,7 kg **Volume** 0,09 m³ **Unit** 1 pc



30017 Dining chair • stackable
 W 58,0 cm / 22.8" D 57,0 cm / 22.4" H 74,0
 cm / 30.3" SH 47,8 cm / 18.8" **Net/Gross**
weight 4,95 kg / 37,5 kg **Volume** 0,59 m³
Unit 6 pcs



30054 Lounge chair • stackable
 W 72,5 cm / 28.5" D 72,0 cm / 28.3"
 H 75,0 cm / 29.5" SH 37,5 cm / 14.7" **Net/**
Gross weight 6,9 kg / 22,5 kg **Volume** 0,52 m³
Unit 2 pcs



mindo 101 Tables & Chairs

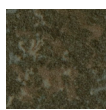
Design by Thomas E. Alken

Colours

Tables w/ ceramic top



ALU FRAME:
Light Grey 010



CERAMIC TOP:
Steel Chrome

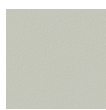


ALU FRAME:
Dark Grey 070



CERAMIC TOP:
Opium Black

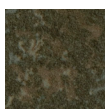
Tables w/ teak top (+ ceramic insert)



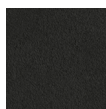
ALU FRAME:
Light Grey 010



TOP:
Teak



CERAMIC
INSERT:
Steel Chrome



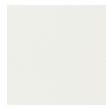
ALU FRAME:
Dark Grey 070



TOP:
Teak



CERAMIC
INSERT:
Opium Black



ALU FRAME:
Off-white 012



TOP:
Teak



CERAMIC
INSERT:
Basic Neu

Chairs



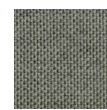
ALU FRAME:
Light Grey 010



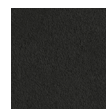
SEAT:
Teak



ROPE:
Beige Brown



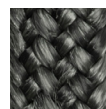
CUSHION:
Carbon 558



ALU FRAME:
Dark Grey 070



SEAT:
Teak



ROPE:
Dark Grey



CUSHION:
Sooty 481

Materials & Care

ALUMINIUM is a lightweight, yet strong and durable material and ideal for outdoor furniture due to its resistance to corrosion. All our aluminium undergoes a high-quality, solvent-free powder coating for extra protection before being processed. If the coating is damaged due to dents or scratching, moisture can invade and eventually damage the aluminium. Regularly remove dirt with a sponge or soft brush, lukewarm water, and a mild dishwashing detergent. Never use solvents. Thoroughly rinse with clean, fresh water after cleaning to remove all soap and dirt residue.

TEAK is a hardwood well suited for outdoor use, whether oiled or left untreated. All the teak used has not been treated and will acquire a grey patina over time. If the warm look of the teak is to be maintained, oiling with a suitable teak oil will be necessary before taking the furniture into use. The frequency required for such treatment depends on the climate the furniture is exposed to. Teak is a natural material; therefore, minor cracks and slight warping of the slats may be expected and are not a sign of inferior quality. Teak is easy to maintain as daily cleaning is simply brushing off loose dirt. Spills should be taken quickly, especially if the teak has not been treated. A mild dishwashing detergent and a soft brush or sponge in the direction of the grain will usually suffice. Always rinse the area well to remove any soap residue. Tougher stains might require light sanding. If treated previously, the treatment must be repeated after sanding the area. The teak slats can be removed and individually replaced if necessary.

CERAMIC tabletops are extremely strong and almost maintenance-free, therefore ideal for outdoor use. Ceramic is made from natural and recycled raw materials. Small variations might occur on the surface which has no effect on the quantity of the product. Daily cleaning is done with a soft cloth and lukewarm water. For heavier staining, use a neutral or alkaline cleaner (never acid-based). Always rinse well after cleaning to remove all soap and dirt residue.



mindó 101 Tables & Chairs

Design by Thomas E. Alken

Materials & Care

ROPE is made from 100% solution-dyed Olyna fibers. Olyna fibers offer great, long-lived resistance to sunlight, dirt, chlorine, and sunscreen lotion due to a spinning process that adds special UV protection and antioxidants to the fabric. This high-quality material offers an unusually soft, "wool-like" surface, which is very comfortable and has strong anti-allergenic properties. We recommend frequent vacuuming or brushing off dirt/dust to avoid stains or mildew. Most dirt and stains can be cleaned off if treated promptly. The fabric can be washed with lukewarm, soapy water (<30°C/90°F). A soft bristle brush is advisable. Do not dry in electric or gas dryers, and avoid ironing the fabric. Excessive heat will shrink the fabric, we recommend air or line drying.

FABRIC (SUNBRELLA) is made from high-quality, 100% solution-dyed acrylic fibers produced in France. Sunbrella is designed for outdoor use and comes with a repellent surface that is hydrophobic and delays the adhesion of stains and dirt. This effect will decrease over time depending on the climatic impact. Clean with a soft bristle brush and lukewarm water/mild soapy water. Air drying is recommended to prevent mildew. We propose cleaning the cushions regularly depending on the climate; stains and dirt should be removed swiftly after they are discovered. Do not steam-iron the fabric; only use a dry iron on the lowest temperature setting, e.g., through a cloth. It is advisable to test a small area first.

Storage & Covers

The tables and chairs can be left outside during the summer as well as the off-season. During the off-season, we recommend storing your furniture in a dry and ventilated place, like a covered patio or similar. This will give your furniture maximum protection and make spring cleaning easier. Alternatively, store the furniture under a furniture cover. A cover should be placed in such a manner that it is kept slightly away from the table tops to minimise condensation and allow for free air circulation. Condensation forming under the cover during storage, as well as tables that were damp before storage, can cause mould and mildew. Therefore it is vital that the table tops (especially teak) are completely dry before storage. Checking the stored furniture regularly and letting moisture escape by lifting the cover on dry days is helpful.

mindó 101 dining table rectangular incl. chairs: Cover no. 4

mindó 101 dining table square incl. chairs: Cover no. 5

mindó 101 dining table round incl. chairs: Cover no. 5

mindó 101 café table incl. chairs: best match Cover no. 1

Links

[Mindó 101 Collection](#)

[Mindó 101 2D/3D files](#)

www.mindo.com