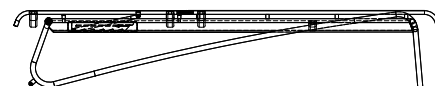
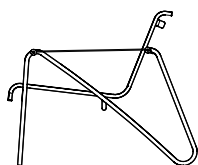
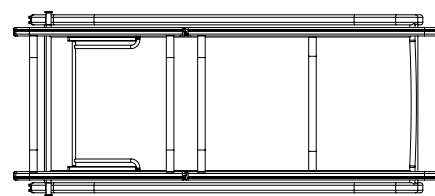
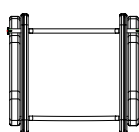
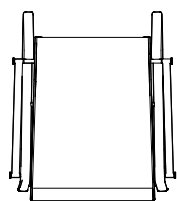




# mindò 105 Lounge collection

Design by Thomas E. Alken

## Dimensions



### 30001 Lounge chair

W 77,7 cm / 30.6" D 88,5 cm / 34.8" H 72,5 cm / 28.5" SH 39 cm / 15.4" **Net/Gross weight** 7,6 kg / 24,9 kg **Volume** 0,71 m<sup>3</sup> **Unit** 2 pcs

### 30084 Footstool

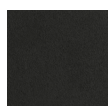
W 58 cm / 22.8" D 52 cm / 20.5" H 38 cm / 15" **Net/Gross weight** 3,2 kg / 12,1 kg **Volume** 0,21 m<sup>3</sup> **Unit** 2 pcs

### 30085 Sunbed

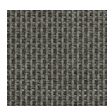
L 203 cm / 79.9" W 88 cm / 34.6" H 37 cm / 14.6" **Net/Gross weight** 20,3 kg / 33,8 kg **Volume** 0,79 m<sup>3</sup> **Unit** 1 pc

## Colours

### Dark Grey



ALU FRAME:  
Dark Grey 070

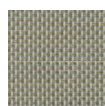


FABRIC:  
Batyline Eden  
Brown/Grey Mix

### Light Grey



ALU FRAME:  
Light Grey 010



FABRIC:  
Batyline Eden  
Beige Mix

## Materials & Care

**ALUMINIUM** is a lightweight, yet strong and durable material and ideal for outdoor furniture due to its resistance to corrosion. All our aluminium undergoes a high-quality, solvent-free powder coating for extra protection before being processed. If the coating is damaged due to dents or scratching, moisture can invade and eventually damage the aluminium. Regularly remove dirt with a sponge or soft brush, lukewarm water, and a mild dishwashing detergent. Never use solvents. Thoroughly rinse with clean, fresh water after cleaning to remove all soap and dirt residue.

The **FABRIC BATYLINE EDEN** is manufactured in France from 100% coated polyester, has exceptional outdoor qualities and a unique soft and "wool"-like tactility. Batyline Eden is extremely durable, easy to maintain, and dries quickly after rain showers, making it ideal for hotels and restaurants as well as for private homes. The material is recyclable as well as phthalate free. Use a soft bristle brush to regularly remove dust and dirt, for dried-in stains use lukewarm water and a mild detergent. Do not dry in electric or gas dryers, and avoid ironing the fabric. Excessive heat will shrink the fabric, so we recommend air drying.



# mindó 105 Lounge collection

Design by Thomas E. Alken

## Storage & Covers

---

The entire mindo 105 collection can be left outside during the entire summer season. During the off-season, we recommend storing the furniture in a dry and ventilated place, like a covered patio or similar. This will give your furniture maximum protection and make spring cleaning easier. Alternatively, store it under a furniture cover. A cover should be placed in such a manner that it is kept slightly away from the furniture to minimise condensation and allow for free air circulation. Condensation forming under the cover during storage, as well as furniture or cushions that were damp before storage, can cause mould and mildew. Therefore it is vital that the furniture as well as any cushions are completely dry before storage. Checking the stored furniture regularly and letting moisture escape by lifting the cover on dry days is helpful. We recommend storing any loose cushions upright or in a slanted position for maximum air circulation. Placing them with their backside up will protect the more visible parts if staining should occur.

mindó 105 lounge chair: Cover no. 1

mindó 105 footstool: store with the lounge chair

mindó 105 sunbed: Cover no. 9

## Links

---

[Mindó 105 Collection](#)

[Mindó 105 2D/3D files](#)

[www.mindo.com](http://www.mindo.com)