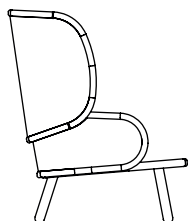
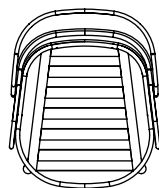




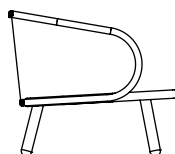
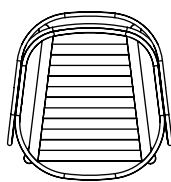
mindó 118 Lounge group

Design by Odosdesign

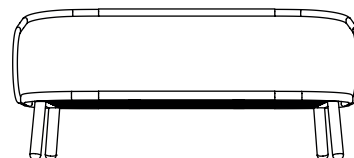
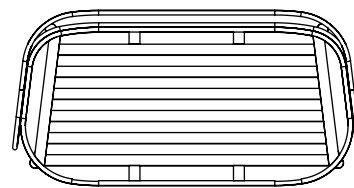
Dimensions



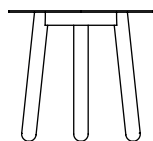
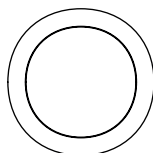
30070 High back Lounge chair
W 79 cm / 31.1" **D** 94 cm / 37.1" **H** 112 cm / 44.1" **SH**
 42 cm / 16.5" **Net/Gross weight** 18,3 kg / 30 kg
Volume 0,92 m³ **Unit** 1 pc



30081 Lounge chair (only FCL purchases)
W 79 cm / 31.1" **D** 81 cm / 31.8" **H** 69,8 cm / 27.5" **SH**
 47 cm / 18.5" **Net/Gross weight** 14,3 kg / 25,5 kg
Volume 0,6 m³ **Unit** 1 pc



30082 2-Seater sofa (only FCL purchases)
L 160 cm / 55.1" **W** 81 cm / 18.7" **H** 69,8 cm / 27.5" **SH**
 47 cm / 18.5" **Net/Gross weight** 27,8 kg / 46,6 kg
Volume 1,11 m³ **Unit** 1 pc



30073 Side table
Ø 50 cm / 19.7" **H** 45 cm / 17.7" **Net/Gross weight**
 4,8 kg / 7,4 kg **Volume** 0,14 m³ **Unit** 1 pc

Colours



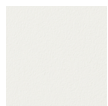
FRAME:
 Dark Grey 070



LEGS:
 Teak



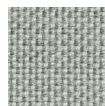
CUSHION:
 Sooty 481



FRAME:
 Off-white 012



LEGS:
 Teak



CUSHION:
 Grey Chine 549

mindó 118 Lounge group

Design by Odosdesign

Materials & Care

ALUMINIUM is a lightweight, yet strong and durable material and ideal for outdoor furniture due to its resistance to corrosion. All our aluminium undergoes a high-quality, solvent-free powder coating for extra protection before being processed. If the coating is damaged due to dents or scratching, moisture can invade and eventually damage the aluminium. Regularly remove dirt with a sponge or soft brush, lukewarm water, and a mild dishwashing detergent. Never use solvents. Thoroughly rinse with clean, fresh water after cleaning to remove all soap and dirt residue.

TEAK is a hardwood well suited for outdoor use, whether oiled or left untreated. Mindó's teak is certified, not treated and will acquire a grey patina over time. If the warm look of the teak is to be maintained, oiling with a suitable teak oil will be necessary before taking the furniture into use. The frequency required for such treatment depends on the climate the furniture is exposed to. Teak is a natural material; therefore, minor cracks and slight warping of the slats may be expected and are not a sign of inferior quality. Teak is easy to maintain as daily cleaning is simply brushing off loose dirt. Spills should be taken quickly, especially if the teak has not been treated. A mild dishwashing detergent and a soft brush or sponge in the direction of the grain will usually suffice. Always rinse the area well to remove any soap residue. Tougher stains might require light sanding. If treated previously, the treatment must be repeated after sanding the area. The teak slats can be removed and individually replaced if necessary.

Our **FABRIC (SUNBRELLA)** is made from high-quality, 100% solution-dyed acrylic fibers produced in France. Sunbrella is designed for outdoor use and comes with a repellent surface that is hydrophobic and delays the adhesion of stains and dirt. This effect will decrease over time depending on the climatic impact. Clean with a soft bristle brush and lukewarm water/mild soapy water. Air drying is recommended to prevent mildew. We propose cleaning the cushions regularly depending on the climate; stains and dirt should be removed swiftly after they are discovered. Do not steam-iron the fabric; only use a dry iron on the lowest temperature setting, e.g., through a cloth. It is advisable to test a small area first.

Storage & Covers

The mindó 118 lounge collection can be left outside during the entire summer season. During the off-season, we recommend storing the furniture in a dry and ventilated place, like a covered patio or similar. If the furniture is stored under a Cover, it should be placed in such a manner that it is kept slightly away from the furniture to minimise condensation and allow for free air circulation. Condensation forming under the cover during storage, as well as other furniture or cushions that were damp before storage, can cause mould and mildew. Therefore it is vital that the furniture as well as any cushions are completely dry before storage. Checking the stored furniture regularly and letting moisture escape by lifting the cover on dry days is helpful. We recommend storing any loose cushions upright or in a slanted position for maximum air circulation. Placing them with their backside up will protect the more visible parts if staining should occur.

mindó 118 High back Lounge chair: Cover no. 1

mindó 118 Lounge chair: Cover no. 1

mindó 118 2-Seater sofa: Cover no. 3

mindó 118 Side table: place with other furniture

Links

[Mindó 118 Collection](#)

[Mindó 118 2D/3D files](#)

www.mindo.com